



UGANDA WILDLIFE AUTHORITY

AJAI WILDLIFE RESERVE GENERAL MANAGEMENT PLAN 2021/22 - 2030/31

JANUARY 2021

Conservation for Ecological, Cultural and Aesthetic benefits to Support Community livelihoods

Cover Page Photograph

Beautiful sceneries of Ajai grasslands

Availability

This publication is available in hard copy from UWA library and a soft copy from the UWA website <http://www.ugandawildlife.org>

Citation

UWA (2021): Ajai Wildlife Reserve General Management Plan 2021/22 - 2030/31



UGANDA WILDLIFE AUTHORITY


Plot 7 Kira Road, Kamwokya

P.O.Box, Kampala Uganda

Tel: +256 414 355 000

Fax: +256 414 546 291

Email: info@wildlife.go.ug

 www.ugandawildlife.org

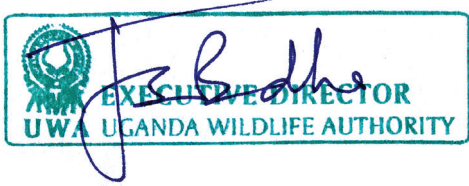
 [ugandawildlifeauthority](https://www.facebook.com/ugandawildlifeauthority)

 [ugandawildlife](https://twitter.com/ugandawildlife)

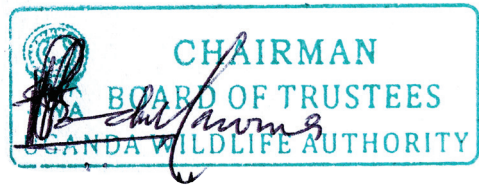
@2021 UWA all rights reserved

Approval

The 9th Board of Trustees of Uganda Wildlife Authority at their 7th sitting on 17th February, 2021 at Chobe Safari Lodge in Murchison Falls National Park approved this General Management Plan for implementation.



Mr. Samuel John Mwandha
EXECUTIVE DIRECTOR



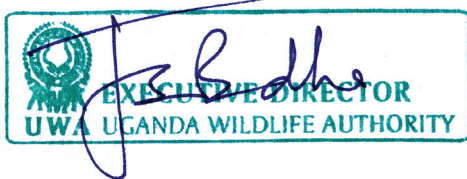
Dr. Pantaleon Kasoma B. Mukasa
CHAIRMAN, BOARD OF TRUSTEES

The preparation of the General Management Plans (GMPs) for Protected Areas is a statutory requirement as the Uganda Wildlife Act 2019 recognizes the importance of planning as a management tool. The formulation of this GMP is a fulfillment of this requirement. This Plan is therefore aimed at providing the Uganda Wildlife Authority (UWA) field team at Ajai Wildlife Reserves (AWR) with guidance towards achieving sustainable management of the wildlife and its habitat as well as proper development of infrastructure and facilities.

Ajai Wildlife Reserve (AWR) is an area with unique flora and fauna and known for the earlier existence of the Northern White Rhinos which have since gone extinct. To achieve the conservation goal of the reserve, UWA will need to create and promote strategic partnerships with critical stakeholders from West Nile sub-region. Accordingly, UWA commenced the planning process for AWR with full stakeholder participation. The preparation of this plan was therefore undertaken through a multidisciplinary and consultative approach involving various stakeholders at community, district, and national levels to ensure that all concerns are adequately addressed. This plan comes at a time when the Rhino feasibility study for ecosystem suitability assessment in various PAs, including AWR is being undertaken. Having taken into consideration this aspect, and keeping in mind the emerging opportunities and challenges, I am confident that implementation of this plan will enjoy the support of all stakeholders. It is my strong belief that the plan will enhance the conservation and management of the reserve for the benefit and enjoyment of the people of West Nile sub-region in particular and Uganda as a whole.

I would like to thank all those who worked tirelessly to prepare this GMP. Special thanks go to the Planning Unit and the Planning team for their time and efforts put in the planning process. Allow me to also express my gratitude to the entire UWA Board of Trustees for their invaluable input, which enabled us to finalize the document.

It is with great pleasure that I now entrust the Chief Warden of Murchison Falls Conservation Area and particularly the Warden in Charge AWR with the authority to implement this GMP for the next ten financial years (2021/22-2030/31).



Samuel John Mwandha
EXECUTIVE DIRECTOR

Acknowledgments

The development of this General Management Plan (GMP) involved stakeholder participation including Central and lower-level Government structures, Non-Government Organizations (NGOs) and local communities.

UWA therefore appreciates the contributions from the District political and technical staff of Arua and Madi-Okolo, the Lugbara cultural institution, NGOs, sub-county representatives and resource users from Ogoko, Okollo and Pawor Sub-counties.

UWA acknowledges the guidance and commitment of Mr. Irumba Deziderius and Ms. Gladys Nagawa who provided consultancy services for data analysis, drafting and formatting of this plan during its formulation.

The Planning Team members who included UWA Head Office and field-based staff, and district representatives are highly appreciated for their commitment in developing the plan.

Lastly but not the least, appreciations also go to the UWA Board of Trustees and members of Top Management for providing guidance to the planning team.

Table of Contents

APPROVAL.....	II
FOREWORD.....	III
ACKNOWLEDGMENTS.....	IV
ACRONYMS.....	VII
EXECUTIVE SUMMARY.....	VIII
PLANNING.....	1
1.1 Purpose for Managing Ajai Wildlife Reserve (AWR).....	2
1.2 The Management Planning Process.....	2
1.3 Enabling Policy and legislation.....	5
1.3.1 Constitution of the Republic Of Uganda 1995.....	5
1.3.2 Biodiversity management policies.....	5
1.3.3 Legal framework for biodiversity management.....	7
1.3.4 National Development Plans.....	7
1.3.5 Sector Development Plans.....	8
1.3.6 International and Regional frameworks for biodiversity management in Uganda.....	9
PART 2: RESERVE DESCRIPTION AND MANAGEMENT.....	11
2.1 Historical Background of Ajai Wildlife Reserve.....	12
2.2 Location, size, altitude and access.....	12
2.3 Rainfall.....	14
2.4 Vegetation.....	14
2.5 Encroachment.....	14
2.6 Fauna.....	15
2.7 Socio economic background.....	15
2.8 Management History.....	15
2.9 Previous General Management Plans.....	16
PART 3: CONSERVATION VALUES, PURPOSE AND MANAGEMENT ZONES.....	18
3.1 Conservation Values.....	19
3.1.1 Ecological values.....	19
3.1.2 Aesthetic Values.....	19
3.1.3 Cultural values.....	20
3.1.4 Livelihood support.....	21
3.1.5 Research and education.....	21
3.2 Overall Management Purpose.....	21

3.3	AWR Management Zones.....	21
PART 4: MANAGEMENT PROGRAMS.....		26
4.1	RESOURCE CONSERVATION AND MANAGEMENT PROGRAM.....	27
4.2	ECOLOGICAL MONITORING AND RESEARCH PROGRAM.....	31
4.3	CAPACITY DEVELOPMENT PROGRAM.....	34
4.4	COMMUNITY CONSERVATION PROGRAM.....	39
4.5	TOURISM DEVELOPMENT AND FINANCIAL SUSTAINABILITY PROGRAM.....	42
4.6	GOVERNANCE AND CORPORATE AFFAIRS PROGRAM.....	44
PART 5: COSTING.....		46
PART 6: MONITORING AND EVALUATION.....		60
6.1	Monitoring and Evaluation Framework.....	61
REFERENCES.....		63
ANNEXES.....		64
Annex 1: UWA Planning Team.....		64
Annex 2: Coordinates of areas visited during Field Reconnaissance exercise.....		65
Annex 3: Field Reconnaissance and Consultative meeting attendance lists.....		66
Annex 4: Bird species checklist in AWR.....		71

LIST OF FIGURES

Figure 1:	Illustration of UWA GMP development process.....	4
Figure 2:	Map showing the location of Ajai Wildlife Reserve.....	13
Figure 3:	Map showing the management zones of AWR.....	22
Figure 4:	Distribution of various illegal activities in AWR 2007-2019.....	28

LIST OF PLATES

Plate 1:	Community members at one of the stakeholder consultations at Okollo Subcounty.....	3
Plate 2:	Participants in the Proposal Generation Workshop at Buffalo Hotel in Hoima Town.....	3
Plate 3:	Beautiful sceneries of Ajai grasslands.....	20
Plate 4:	Harrisonia abyssinica, one of the invasive plants in AWR.....	33
Plate 5:	AWR dilapidated reception centre (Left) and Offices (on the Riht).....	36
Plate 6:	AWR guest house at Ayavu HQs (Left) and Junior staff accommodation at Ayavu (Right).....	36

Acronyms

AWCC	Assistant Warden Community Conservation
AWR	Ajai Wildlife Reserve
BDM	Business Development Manager
CCR	Community Conservation Ranger
CCU	Community Conservation Unit
CM	Communications Manager
CW	Chief Warden
DTO	District Tourism Officer
ED	Executive Director
EMRU	Ecological Monitoring and Research Unit
GMP	General Management Plan
HWC	Human Wildlife Conflict
LE	Law Enforcement
NFA	National Forestry Authority
NP	National Park
UWA	Uganda Wildlife Authority
VU	Veterinary Unit
WCC	Warden Community Conservation
WEM	Warden Ecological Monitoring
WIC	Warden-in charge
WLE	Warden Law Enforcement
WT	Warden Tourism

Executive Summary

Ajai Wildlife Reserve (AWR) covers an area of 166sq.km (Boundary Plan UWA/AJWR/1) and is located in West Nile Region in the newly created district of Madi-Okollo. Its altitude ranges from 700m to 900m above sea level. It lies within the geographical coordinates of 20 55' and 30 00' North, and 310 05' and 310 25'E. It is bordered by the seasonal rivers Linya and Ala to the West and Acharo to the South- East and touches the Albert Nile to the East. It is situated 431km north west of the capital city Kampala. AWR can be accessed via Kampala-Pakwach-Wadellai-Inde/Ajai or Kampala-Pakwach-Nebbi-Arua-Inde/Ajai-Pakwach roads.

The purpose of conserving AWR for the next ten years is “to conserve AWR as a Wildlife habitat for its ecological, cultural and aesthetic values to support the livelihood of the present and future generations”.

The reserve purpose highlighted above was drawn after consideration of the following values identified during the planing process:

- i) Ecological values including water catchment services, contribution to the hydrological cycle and modification of climate, flood control, and contribution to soil protection.
- ii) As a wildlife habitat for a variety of wildlife including birds and animals and its potential as a conducive habitat for Northern White Rhino.
- iii) High aesthetic values such as attractive sceneries including the Nile bank and extensive grasslands and wetlands that can be observed from the top of Ombi, Inde and Erave hills.
- iv) Cultural values including Ajai Island which was the palace of the re-known Chief Ajai.
- v) AWR provides livelihood support to households in the surrounding communities in form of fire wood, poles, medicine, thatch grass, etc.
- vi) Provision of opportunities for education and research.

For effective implementation of the planned activities and realization of the conservation values, AWR has been zoned into the following zones:

- a) Administrative zone
- b) Tourism zone
- c) Wilderness zone
- d) Resource access zones
- e) Restoration Zone

A programmatic approach will be employed in order to systematically implement the planned activities in each of the above zones as described in subsequent sections of this plan. In order to ascertain and appropriately keep track of the General Management Plan (GMP) implementation progress, monitoring and evaluation will be carried out using a robust monitoring and evaluation framework.

This will employ a variety of approaches including routine monitoring which will provide information for quick decision-making and corrective measures. A mid-term evaluation will be conducted in the 5th year to assess the extent to which the planned objectives have been achieved and recommend actions for improvement during the second half of the plan implementation period. A final evaluation will be conducted in the 10th year to assess the extent to which the planned objectives were achieved, impacts generated, the effectiveness and efficiency of approaches, methods and resource utilization in implementing the plan.





Part One

PLANNING

1.1 Purpose for Managing Ajai Wildlife Reserve (AWR)

Ajai Wildlife Reserve (AWR) is one of the wildlife reserves managed by Uganda Wildlife Authority (UWA). Since the 1930s the reserve has evolved from a wildlife sanctuary, Game Reserve and now a Wildlife Reserve. The reserve's existence has been based on the need to conserve the unique wildlife including flora and fauna with specific focus on conserving the Northern sub-species of the White Rhinos which got extinct due to lawlessness in the 1970s and 1980s. Management of AWR has also evolved over time; the reserve was initially managed by the traditional leaders with Chief Ajai being the most known, followed by the Uganda Game Department and now the Uganda Wildlife Authority.

Over the years, beyond maintaining the reserve boundaries and conserving fauna and flora, the list of desires for which the reserve should be conserved has increased to include preservation of cultural history, promotion of tourism, monitoring and research and conservation of reserve resources. These desires reflect the multiplicity of stakeholders' views and the need to balance the various interests in the management of AWR.

It should be noted that the tools for managing of the AWR have also evolved from directives by the Chiefs in the early 1930s, Annual Operation Plans to the General Management Plans (GMPs), with the first and most recent one being the 2007-2017 GMP.

The 2021-2031 AWR GMP is the second since the reserve was gazetted with the purpose “to conserve AWR as a Wildlife habitat for its ecological, cultural and aesthetic values to support the livelihood of the present and future generations”.

1.2 The Management Planning Process

The management planning process for AWR involved hiring the services of a consultant, selection of the planning team, data collection through field reconnaissance and stakeholder consultations, conducting proposal generation and stakeholder validation workshops, drafting of the plan, and reviewing and presentation of the draft plan to UWA management. The planning processes are briefly described below.

a) Procurement of consultant services

The planning process for AWR started with procurement of the services of a consultant using the Public Procurement and Disposal of Public Assets (PPDA) procedures. The role of the consultant was to facilitate the whole process of development of the plan including collection of some data, and analyzing all the data collected by the team from the field exercises, facilitating proposal generation, stakeholder validation, budgeting workshops and drafting the plan.

b) Selection of a Planning Team

A multi-disciplinary planning team was selected with the role of collecting data and information for developing the management plan and generation of proposals. The planning team comprised of UWA Head Office and field-based staff, and representatives from local governments as indicates in Annex I.

c) Field Reconnaissance

The planning team together with the consultant went through a step-by-step process which involved field reconnaissance of different areas of the reserve (Annex II) to understand the key issues needed for planning requirements of the reserve. The areas visited included Ombi and Eranve hills; Chief Ajai's Palace; Lali and Madali Outposts; the Degia area and the Ayavu AWR Headquarters, among others.

d) Stakeholder consultations

Stakeholder consultations (Annex 3) were conducted in Okollo, Ogoko and Pawor Sub-counties. The consultations included conduction of meetings for gathering the views from the community (Plate 1), NGOs, cultural leaders, sub-county and district leaderships. UWA field-based staff working in Ajai AWR were also consulted.



Plate 1: Community members at one of the stakeholder consultations at Okollo Sub-county

e) Data Analysis

The data gathered from the field reconnaissance and stakeholder consultations was documented and analyzed into situational reports by the consultant, and later presented to the planning team during the proposal generation workshop.

f) Proposal generation workshop

The data analysis exercise was followed by the proposal generation workshop during which the planning team (Plate 2) harmonized the issues and views collected from various stakeholders and agreed on proposals for management of Ajai Wildlife Reserve from 2021 to 2030.



Plate 2: Participants in the Proposal Generation Workshop at Buffalo Hotel in Hoima Town

g) Stakeholder validation workshops

The planning unit together with the consultant conducted stakeholder validation workshops in Ogoko, Okollo and Pawor Sub-counties to present the draft proposals and get feedback which was consolidated as final actions of the plan. The Planning Team also developed the budget for activities under each programme of the plan.

h) Presentations to UWA Leadership

The Draft GMP was presented to different levels of UWA leadership including UWA Senior Management, Top Management and finally to the Board of Trustees where it was approved. In summary, the development of the General Management Plan for Ajai Wildlife Reserve was guided by the UWA GMP planning process (or manual) as illustrated in Figure 1 below:

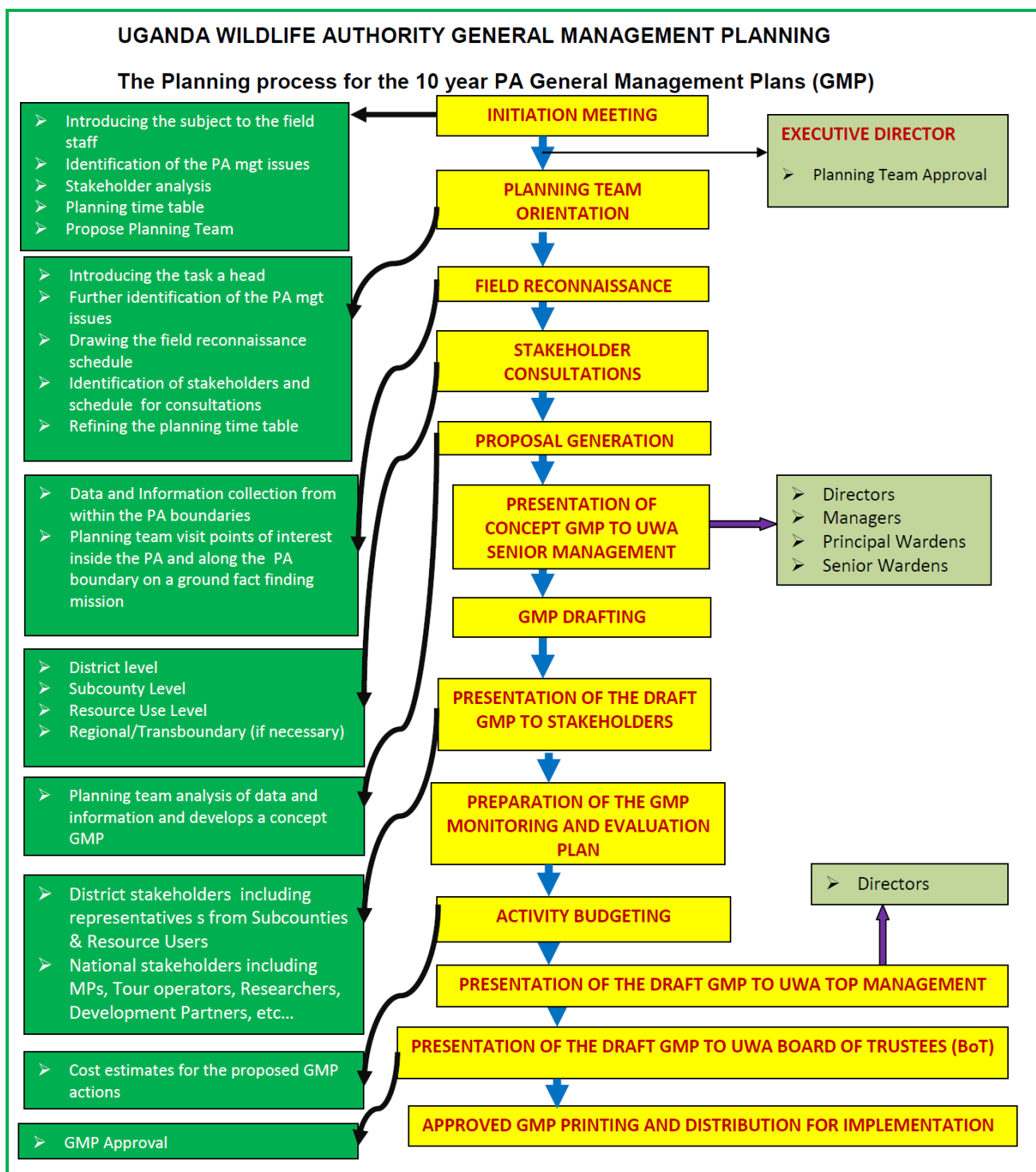


Figure 1: Illustration of UWA GMP development process

1.3 Enabling Policy and legislation

Protected areas (PAs) in Uganda are managed in line with the national, regional and International policy and legal frameworks. GMPs for PAs are hinged on existing policy and legal frameworks. Some of the policies and laws pertaining to wildlife and biodiversity conservation in Uganda, AWR in particular, are described below.

1.3.1 Constitution of the Republic Of Uganda 1995

The over-all legal framework for biodiversity management in Uganda is the Constitution of the Republic of Uganda (amended 2005). The National Constitution provides for the following biodiversity management areas:

a) Protection of natural resources:

Objective No. XXVII provides for management of natural resources in such a way as to meet the development and environmental needs of the present and future generations of Uganda, particularly by taking all measures to prevent or minimize damage and destruction to land, air and water resources resulting from pollution or any other kind of natural resource degradation.

b) Management of natural resources:

Article 237 (2)(b) gives powers to Government or Local Government as determined by Parliament to hold in trust for the people and protect natural lakes, rivers, wetlands, forests, game and forest reserves, national parks and any land to be reserved for ecological and touristic purposes for the common good of all citizens. AWR is one of such reserves.

c) Article 286 of the Constitution

gives effect to international treaties, which Uganda was a party to before the promulgation of the Constitution in 1995.

1.3.2 Biodiversity management policies

These include the following, among others:

a) National Environment Management Policy (1995)

The National Environment Management Policy (1995) provides for the institutional structure as well as policy measures for biodiversity management in Uganda. The over-all goal of the policy is sustainable, social and economic development, which maintains or enhances environmental quality and resource productivity on a longer-term basis that meets the needs of the present generations without compromising the ability of future generations to meet their own needs. The specific objectives of the policy are very applicable to the management and conservation of AWR and these include:

- i) Enhance health and quality of life of all Ugandans and promote long-term sustainable economic development through sound environmental and natural resources management and use.
- ii) Integrate environmental concerns in all development-oriented policies, planning and activities at national, district and local levels, with participation of the people.
- iii) Conserve, preserve and restore ecosystems and maintain ecological processes and life support systems, including conservation of national biodiversity.
- iv) Optimize resource use and achieve sustainable level of resource consumption.

v) Raise public awareness to understand and appreciate linkages between environment and development.

vi) Ensure individual and community participation in environmental improvement activities

The policy therefore recognizes PAs as the cornerstone for protection of national biological diversity. It also provides opportunities for stakeholder participation in the management of PAs. The policy particularly suggests a mechanism for collaboration between Managers of PAS and the neighboring communities to foster conflict resolution involvement of local communities in the planning, management and decision-making process.

The AWR GMP caters for the policy provisions through the various programs such as resource conservation and management, ecological monitoring and research, community conservation and tourism development among others.

b) The Uganda Wildlife Policy, 2014

The Uganda Wildlife Policy vision for the Wildlife Sector is focused on “Sustainably managed and developed wildlife resources and healthy ecosystems in a developed Uganda”. The Policy goal is to conserve wildlife resources of Uganda in a manner that contributes to the sustainable development of the nation and the well-being of its people.

The Policy objectives are outlined as:

- i. To promote sustainable management of Uganda’s wildlife Protected areas
- ii. To sustainably manage wildlife populations in and outside Protected areas
- iii. To promote sustainable and equitable utilization of wildlife resources as a viable form of land use for national economic development
- iv. To effectively mitigate human wildlife conflicts
- v. To promote wildlife research and training
- vi. To promote conservation education and awareness across the nation
- vii. To ensure net positive impacts of exploration and development of extractive industries and other forms of development in wildlife conservation areas
- viii. To effectively combat wildlife related crime
- ix. To promote and support local, regional and global partnerships for conservation of wildlife

In addition to the above policy objectives, Uganda Wildlife Policy strategies highlight the management of all Protected Areas in accordance with National Protected Area Systems Plan, General Management Plans, Annual Operational Plans and other regulations; and Restore all degraded wildlife protected areas in accordance with approved management plans. The development of AWR GMP is therefore tailored to fulfill some of the above critical areas of wildlife protected area management.

c) The Tourism Policy of Uganda, 2015

The Tourism Policy recognizes Uganda as a top and prominent tourism destination amongst the East African countries during the 1960’s. This opportunity was however lost during the turmoil of the 1970’s and 1980’s which resulted in drastic reduction of wildlife numbers. The civil strife destroyed infrastructure and consequently contributed to reduction in tourist numbers. AWR lost its key wildlife species such as the Northern White Rhino during that period.

The policy aims at promoting tourism as a vehicle for poverty eradication in Uganda. It further recognizes UWA’s role and contribution towards achievement of this objective through effective management and development of the wildlife resources and marketing various products. Through the Tourism and Financial Sustainability Programme, AWR GMP aims at promoting the PA as a major tourist destination through identifying, developing and marketing tourist attractions

thus contributing to this policy objective.

1.3.3 Legal framework for biodiversity management

a) The Uganda Wildlife Act 2019

The Uganda Wildlife Act 2019 provides for sustainable management of wildlife conservation areas and public participation in the management of wildlife resources in and outside protected areas. The Act under section 21 requires the Executive Director, with approval from the Board, to prepare or cause to be prepared, a comprehensive General Management Plan for each wildlife protected area in consultation with various stakeholders including the district council and the general public. It provides for the publication and review of the GMP accordingly. Development of AWR GMP is therefore in fulfillment of the legal provisions of the Uganda Wildlife Act 2019.

b) The National Environment Act, 2019

The objective of the National Environment Act, 2019 is to further the principles of environmental management by facilitating the conservation and enhancement of the environment. The Act provides for Wildlife protection and contains provisions, which can be applied to the protection and sustainable use of wildlife. Different sections of the management plan address the provisions of this Act.

c) The National Forestry and Tree Planting Act, 2003

The Act provides for the conservation, sustainable management and development of forests, and the promotion of tree planting for the benefit of the people of Uganda and the international community. It classifies forests in Uganda as central forest reserves, local forest reserves, community forests and forests forming part of a wildlife conservation area. The Act recognizes various stakeholders in the management of forest reserves, which should be guided by the Management Plan prepared by the responsible body. In addition, the Act aims at ensuring that forests and trees are conserved and managed in a manner that meets the needs of the present generation without compromising the rights of future generations by safeguarding forest biological diversity and the environmental benefits that accrue from forest and trees. This management plan therefore provides for conservation of trees and woodlands to ensure that the present generations use these resources sustainably to meet the demands of the future generations. AWR GMP promotes tree planting as one of the community livelihood activities under the community conservation program.

1.3.4 National Development Plans

a) National Development Plan III

The NDPIII outlines tourism and natural resources, land and water management as some of the development programs. Tourism is documented as one of the major foreign exchange earners of the country and government's plan in the short run is to focus on improvement, diversification and exploitation of tourism products. Specific mention is made of the need to develop appropriate skills and capacity building, enhance security and eliminate the problem of wildlife dispersal as well as conservation of tourism sites and wildlife. This plan will focus on exploitation and improvement of cultural tourism hinged on historical and cultural background of AWR, Scenic viewing, nature walks through well-established trails in attractive areas around Ayavu, Eranve and Gazi Wetland and Chief Ajai Island, Water tourism along the Albert Nile connecting to Lake Albert, Semuliki River to Semuliki National Park, Game viewing through re-introduction of the White Rhinos and development of Eco-lodges through concessions.

b) Uganda Vision 2040

Uganda Vision 2040 provides for the development paths and strategies to operationalize Uganda's Vision statement, which is "A transformed Ugandan Society from a peasant to a modern and prosperous country within 30 years" as approved by Cabinet in 2007. It recognizes that tourism is one of catalytic potentials for sustainable development and its nature-based with a variety of flora, fauna and beautiful sceneries. Considering its conservation values, and its tourism potentials, sustainable management of AWR will contribute to the achievement of vision 2040 through development of the potential tourism attractions especially the possible re-introduction of the White Rhino for which Ajai AWR is known to be its habitat before it got extinct as a result of poaching in the years of civil strife in the 1970s and 80s.

c) National Biodiversity Strategy and Action Plan (NBSAP, 2015/2025)

The National Biodiversity Strategy and Action Plan (2015/2025) provides overall strategies and actions for management of Uganda's biodiversity as well as measures for enhancing institutional collaboration in the management of biodiversity in Uganda. The NBSAPII highlights and seeks to maintain the contribution of biodiversity and ecosystem services to human wellbeing, poverty eradication, gender equality and national development as well as the economic, social, cultural and other values of biodiversity.

1.3.5 Sector Development Plans

a) Uganda Wildlife Authority Strategic Plan (UWA 2020/21- 2024/25)

The Mission of UWA as stated in the strategic plan is to conserve, economically develop and sustainably manage the wildlife and wildlife protected areas of Uganda in partnership with the neighbouring communities and other stakeholders for the benefit of the people of Uganda and the global community. The goal is to have sustainably managed wildlife areas that are providing enjoyment, supporting community livelihoods and contributing to National development. In order to achieve the above targets, the strategic plan identifies key conservation areas as:

- i. Restoring and maintaining health ecosystems
- ii. Management of Human-Wildlife conflicts
- iii. Achieving financial self-sustainability
- iv. Improvement of infrastructure and equipment

Under the Governance and Financial sustainability strategic program, one of the strategic actions is the preparation and or review of PA general management plans. PA management is guided by planned actions in the GMPs and it is through these GMPs that annual work plans and budgets are generated. Therefore, the management of Ajai Wildlife Reserve shall be guided by this ten-year General Management Plan.

b) The National Forestry Plan, 2012

The National Forestry Plan (NFP) provides a framework for implementing the Forestry Policy of 2001. The Plan under program 3 aims at restoration and conservation of natural forests. The specific relevance of the NFP to the plan is articulated in some of its strategies, namely restore/rehabilitate degraded and deforested natural forests in CFRs and wildlife conservation areas, promote the restoration/ rehabilitation of natural forests on private and communal lands, promote conservation of biodiversity in priority forest reserves and wildlife conservation areas, and promote management of important biodiversity corridors on private and communal land.

1.3.6 International and Regional frameworks for biodiversity management in Uganda

a) International frameworks

Uganda is a signatory to a number of international Conventions, Protocols and Agreements relating to biodiversity management. They include:

- i. Convention on Biological Diversity (CBD),
- ii. Cartagena Protocol on Bio-safety to the Convention on Biological Diversity,
- iii. Convention relating to the Preservation of Flora and Fauna in their Natural State,
- iv. African Convention on the Conservation of Nature and Natural Resources,
- v. Convention on Wetlands of International Importance Especially as Water Fowl Habitat (The RAMSAR Convention),
- vi. Convention Concerning the Protection of the World Cultural and Natural Heritage,
- vii. Agreement on Cooperative Enforcement Operations directed at Illegal Trade in Wild Fauna and Flora,
- viii. United Nations Convention to Combat Desertification (UNCCD),
- ix. United Nations Framework Convention on Climate Change (UNFCCC),
- x. World Trade Organization (Sanitary and Phytosanitary Rules).

The above frameworks are all relevant to conservation of biodiversity in AWR.

b) Regional frameworks

Uganda is signatory to the following regional protocols and agreements which relate to sustainable utilization and conservation of biodiversity:

- i. EAC Treaty,
- ii. EAC Protocol on Environment and Natural Resources Management,
- iii. Protocol for Sustainable Development of Lake Victoria Basin,
- iv. Convention for the establishment of the Lake Victoria Fisheries Organization (LVFO),
- v. EAC Protocol on Wildlife Conservation and Law Enforcement,
- vi. Tripartite Management Agreements for Trans-Boundary Wildlife Protected Area, and,
- vii. Cooperative Framework Agreement on the Nile.

AWR GMP is one of the mechanisms that will contribute to the realization of the provisions of the international and regional frameworks to which Uganda is a signatory.





Part Two

**RESERVE DESCRIPTION
AND MANAGEMENT**

2.1 Historical Background of Ajai Wildlife Reserve

Ajai Wildlife Reserve, named after Chief Ajai, was declared a game sanctuary in 1937. Thereafter, the sanctuary was gazetted as a Game reserve under the game department in 1965 by SI No. 147 of 1965. During that time people were staying within the reserve as evidenced by the presence of non-indigenous plants like mangoes and Cassia forest patches at Inde and Aliwariku suspected to have been, planted by the then Madi Okollo County Chief, Ajai in the 1930's or beyond. During this period, there was an outbreak of inter-clan wars and outbreak of sleeping sickness epidemic that killed many people and forced those who survived to vacate the area, leaving the game to multiply. Chief Ajai left Aliwariku Island and settled at Amadri (now Ojidriku) where he died and was buried in 1955. Since time immemorial traditional hunting among the Madi and Alur inhabitants of the area was for meat, skins and horns which were used in Isego/Imgbiri and Ndara/Aguara traditional dances by the hunters to show their bravery. In the 1950's and 1960's Ajai was a famous sport hunter destination in the then West Nile region. However, during the lawlessness and poor management of the 1970's and 1980's the Rhino population and other big game species were greatly reduced and others decimated. Hence, in 1979 the White Rhino was no longer being seen in the area and in 1994, the last 2 remaining Buffaloes were wiped by poachers in Obei swamp. Likewise, other animal populations like Uganda kob, warthog, water buck, hippo and Sitatunga were affected. Table 1 below is a description of events that occurred in the conservation history of AWR.

Table 1: A summary of Key Historical events surrounding Ajai Wildlife Reserve

Period Year	Event
1937	<ul style="list-style-type: none"> The area currently occupied Ajai WR was declared a game sanctuary
1950-1960	<ul style="list-style-type: none"> Ajai was a famous sport hunters' destination in West Nile region
1955	<ul style="list-style-type: none"> Chief Ajai in whose names the reserve was named, died and was buried at Amadri present day Ajidriku
1965	<ul style="list-style-type: none"> Ajai Sanctuary was gazetted as a Game reserve under the game department by Statutory Instrument (SI) No. 147
1970's - 1980's	<ul style="list-style-type: none"> This was a period of lawlessness and poor management The Rhino population and other big game species reduced
By 1979	<ul style="list-style-type: none"> All Rhino were wiped out of the reserve through poaching
1994	<ul style="list-style-type: none"> The last 2 remaining Buffaloes were wiped by poachers in Obei swamp.
1996	<ul style="list-style-type: none"> Uganda Wildlife Authority was created Ajai Game Reserve management was transferred to the Uganda Wildlife Authority The game reserve was renamed Ajai Wildlife Reserve in line with the statutory provisions.
2007-2017	<ul style="list-style-type: none"> AWR was managed using the 1st GMP
2019	<ul style="list-style-type: none"> Madi-Okollo was offered a district status

2.2 Location, size, altitude and access

AWR is located in Inde Town Council Ogoko, Okollo and Uleppi sub-counties of Madi-okollo county in the new district of Madi-Okollo which was curved from Arua District in 2019 (Figure 2). Inde was declared a Town Council in 2019 following the creation of Madi-Okollo district and is currently the Headquarter of the district. The reserve is 166sq.km (Boundary Plan UWA/AJWR/1) in area and its altitude ranges from 700m to 900m above sea level. It lies within latitudes 20 55' and 30 00' North, and Longitudes 310 05' and 310 25'E. It is bordered by the seasonal rivers Linya and Ala to the west and Acharo to the south-east and touches the Albert Nile to the East. It is situated 431km Northwest of the Kampala Capital City. Ajai AWR can be accessed via Kampala-Pakwach-Wadellai-Inde/Ajai or Kampala-Pakwach-Nebbi-Arua-Inde/Ajai-Pakwach roads. Its main offices are at Inde next to Inde Madi-Okollo district headquarters.

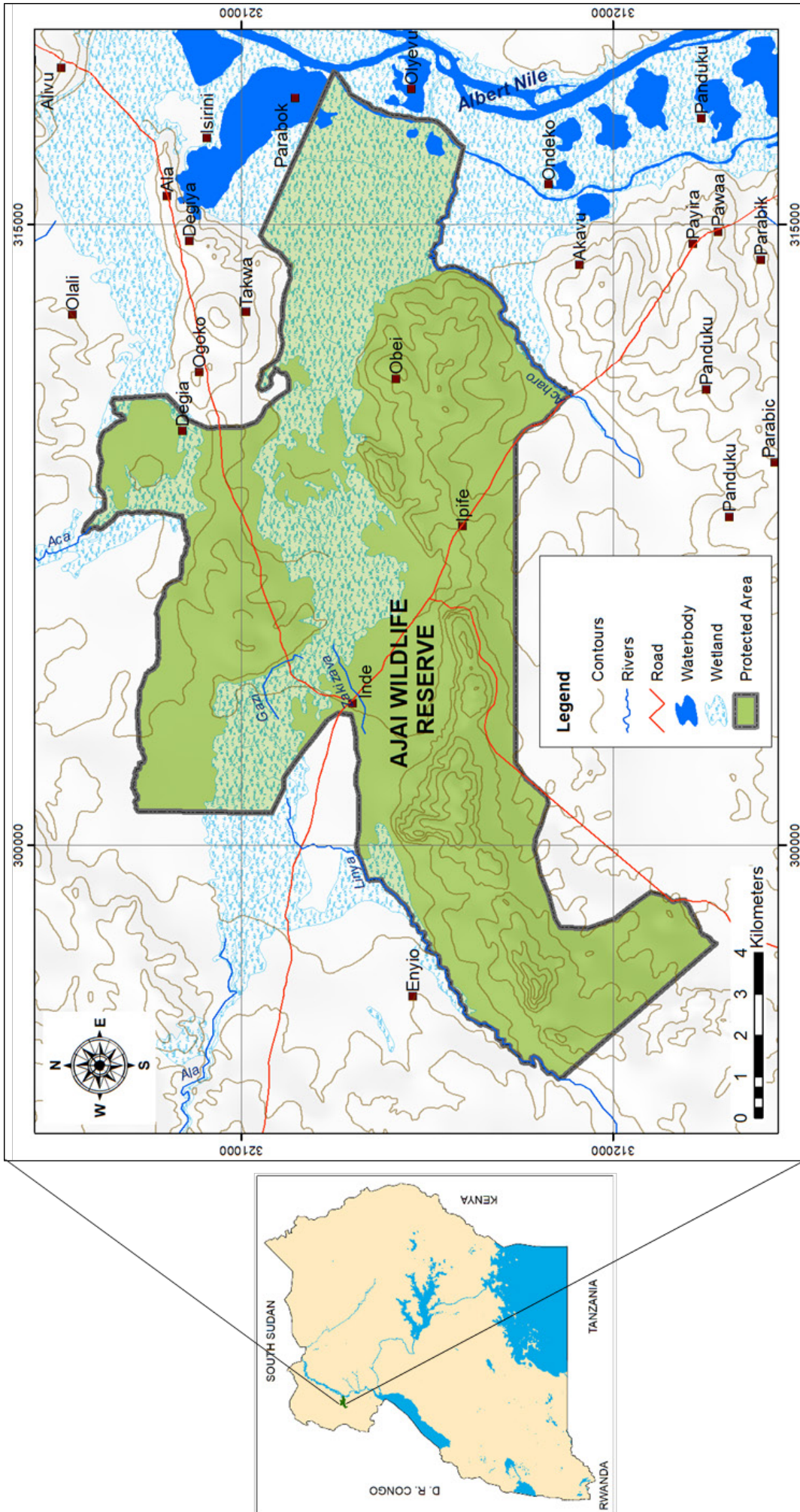


Figure 2: Map showing the location of Ajai Wildlife Reserve

2.3 Rainfall

Rainfall tends to follow the general pattern in the Uganda, with totals over 1000mm per annum not evenly distributed, and with dry spells in March and December. This pattern however is no longer reliable due to climate change trends affecting the country and beyond.

2.4 Vegetation

The Northern and Eastern areas are largely low altitude wooded savanna merging into a swamp. In the southern section a ridge (854m) rises up out of the wooded savanna and supports dry grassland on the north-eastern slope. There is a range of wetland habitats within the reserve associated with a moisture gradient. Wooded savanna predominates with patches of moist woodland and seasonally flooded and swamp grassland fringed by palm swamp forest, grading to permanent swamp. The wildlife Reserve is characterized by six distinct vegetation types in addition to cultivated land namely:

Wooded grassland: Wooded grassland form an open canopy of 10-40% cover with a herbaceous layer characteristically dominated by a grassland association and an intermediate layer usually absent with grass species comprising more than 75% (White, 1983). The vegetation type is a mosaic community, which varies in character over the reserve with different associated tree and grass species. Monocultures of the primary associates occur although never in areas greater than 200 sq. meters.

Woodland: The wooded grassland grades into woodland within distinct borders between the low vegetation types. Only two major areas of woodland occur, both adjacent to the permanent swamp. The woodland is 40 - 75%, with forbes being more dominant in herbaceous layer and shrubs in the under storey (White, 1983).

Riverine woodland: Riverine woodland canopy cover is greater than 75% and canopy height 10-20 m. The vegetation assemblage occurs as thin as 10-20 m wide or as sparse as only one or two trees wide strips along rivers or swamp fringes often blending into Phoenix reclinata swamp forest fragments.

Papyrus swamp: Papyrus swamp occurs mainly in the east of the Obei swamp adjacent to the Nile, but also as small fragment patches throughout the rest of the permanent swamp. Overall, it is permanent standing water with a herbaceous layer almost exclusively dominated by papyrus with no other vegetation layers present.

Invasive vegetation: In addition to the above vegetation types, the reserve is fast being invaded by invasive plants. The exact areas covered is not known but the plants have rapidly been sighted around the AWR headquarters, along Inde Rhino camp road and Eranve hill, among the areas. The plants are highly prolific, do not allow growth of any other vegetation and are therefore capable of taking up the whole reserve if not controlled.

2.5 Encroachment

The 2007-2017 AWR GMP provided for relocation of the Degia community to another area but the community refused the proposed area on account of incompatibility issues with their culture. It should be noted that this community was present at the time of the reserve was gazetted, which makes them a legitimate community that could be compensated leave before they. However, overtime their numbers has kept on increasing. The Degia area is therefore under encroachment as a result of that factor.

2.6 Fauna

Birds

There are a number of bird species in Ajai Wildlife Reserve (Annex 4) as indicated in the earlier 2007-2017 AWR General Management Plan.

Mammals

The variety of different vegetation types, particularly the wetlands, provides a range of habitats, which enhances the fauna diversity of Ajai Wildlife Reserve. However, the breakdown of law and order in Uganda during the late 1970s led to uncontrolled hunting in this reserve. Hunting, both for meat and trophies, led to decimated of many large mammals. The endangered Northern Race White Rhino (*Ceeratotherium simum cottoni*) which was the reason for the original gazettelement, got extinct by 1981. Over the last 10 years of the last GMP, the reserve has been given adequate protection against poaching by UWA staff. medium-sized mammals which have been sighted in the reserve include Sitatunga, Uganda kob, Buffalo, Waterbuck, Bushbuck, Dik-dik, Blue duiker, Oribi, Warthog, bush Pig, Bohor Reedbuck and hippopotamus. The primates include: Black and White Colobus, Vervet monkeys, Patas monkeys and the Olive baboon.

2.7 Socio economic background

The population around the AWR comprise mainly the resident Madi Okollo and Alur tribes and the Maracha, Vurra, Aringa and Terego Lugbara speaking tribes who migrated to the area. Madi-Okollo district houses Rhino Camp Refugee settlement area currently occupied by Southern Sudanese who fled from the civil war in their country. It is likely that some of the refugees may never go back to their where they came from. The Madi and Alur tribes live under clan-structured arrangements, which are clustered in units, that keep expanding resulting into formation of villages.

Compared to Arua, the population of the newly created district of Madi-Okollo faces high illiteracy rates and poverty characterized by poor housing and therefore depends on natural resources for their survival. There is hope that with the new district will improve and put in place, services and other mechanisms that will facilitate increased literacy rate and poverty reduction, and hence reduced dependence on natural resources. Illiteracy and poverty will reach the people faster than has been the case hitherto.

The people live mainly in huts made of mud and wattle and grass and most of the building materials especially thatching materials are obtained from Ajai Wildlife Reserve through Resource MoUs and illegal means. Other materials obtained from the reserve include; ropes, fibres, twigs and papyrus. The people also engage in illegal timber harvesting and charcoal burning in order to earn a living. These activities have left the areas surrounding Ajai Wildlife Reserve degraded.

The population neighboring the reserve carries out small scale farming with the main crops being sorghum, Simsim, millet, groundnuts, cow peas and cassava which are mainly for subsistence while tobacco and cotton are grown for commercial purposes. Sedentary cultivation is practiced on the river banks and swamps of Ala and Acha where crops like sugar cane, yams, okra, potatoes, bananas, rice and tomatoes are planted. These have the potential of degrading the river banks especially as the area is facing prolonged dry seasons are being experienced. The local community also engages in small scale trading mainly in locally produced food stuff such as fish, local brew, charcoal, papyrus mats, honey, medicinal herbs and wild meat. They also trade in finished goods in Ayavu, Odraka, Uleppi, Baribu, Pawor, Matangacia, Ojidriku, Rhino camp, Anguibo and Ajia markets.

Fishing is done on rivers Ala, Acha, Foro, Ore Aliku, Gazi, Muzara using scooping baskets, hooks, small size nets, torch and spear and aestivated fish dug out by hoes and pangas during the dry season. The species caught include *Clarias* spp, *Tilapia* (foro), and *Protopterus* spp (Owhi). The local people illegally hunt for meat, and gather wild fruits such as odu, *Borassus* fruits, shear nuts, *Tamarindus*, agbirici and medicinal plants such as “rokoroko” from the reserve. AWR serves as water catchment to these rivers mentioned above from which the community sources water for domestic use.

2.8 Management History

Management of Ajai Wildlife Reserve has gone through a number of institutions including the cultural institution under Chief Ajai who ruled the area from 1905-1950 and declared Ajai a wildlife sanctuary in 1937 with a major focus on protecting the White Rhinos that inhabited the area. During that time, a British missionary called Dr. Williams who had a leprosy center and church at Kuluva (about 2km from present day Arua Town) was a key stakeholder who valued the reserve because he used to come to collect herbs from the forest (Stewart, 1992) to treat his patients. He advised Chief Ajai to declare the area a wildlife sanctuary. The Game Department managed Ajai as a gazetted Game Reserve from 1965-1996. The Gazettement of Ajai as Game Reserve in 1965 uplifted the status of the reserve and came with demands to have all communities who lived in the reserve to vacate. Notices were issued to communities to this effect. In 1996, the Game Department was dissolved and UWA took over the management of AWR in line with the statutory provisions.

2.9 Previous General Management Plans

Between 1996 and 2007, the Uganda Wildlife Authority managed Ajai Wildlife Reserve using Annual Operational Plans. In 2007, UWA developed the first GMP for Ajai Wildlife Reserve that remained operational until 2017. UWA management extended the plan for two more years during which the planning process for the second GMP started. The purpose of the 2007-2017 GMP to protect and conserve diverse fauna and flora. This was operationalized by stepping up law enforcement interventions and creating better relations with local communities through awareness creation and resource access MoUs. These efforts are reflected in relative increase of the population of large mammals which have been sighted in the reserve during the period of the 2007-2017 GMP. There is hope that during the 2021-2031 GMP, the extinct White Rhino ,for which the reserve was known, will be re-introduced and the population of large mammals will continue to rise.



 *Part Three*

CONSERVATION VALUES, PURPOSE AND MANAGEMENT ZONES

3.1 Conservation Values

3.1.1 Ecological values

a) Water catchment services

AWR is a water catchment area for several rivers which include River Nile and its tributaries such as Gazi, Ala and Acha. The reserve also supports the constant flow of water to the surrounding communities through filtering of water pollutants and regulating water yield. The vegetation cover act as a natural enhancement of precipitation and moderates floods, reducing surface erosion and protection against sedimentation.

b) Contribution to the hydrological cycle and modification of climate

AWR acts as a sink for greenhouse gases and therefore plays a critical role in mitigating climate change effects. The permanent vegetation in the reserve enhances the hydrological cycle through the process of evapotranspiration and influences the micro-climate of the surrounding areas

c) Control of floods

AWR is part of the River Nile flood plain. The vegetation cover of the reserve through the root system and leaf litter plays a critical role in the water infiltration processes, thus protecting the surrounding areas from flooding.

d) Contribution to soil protection

AWR sits on fragile sandy soils that need to be protected to maintain their stability. The reserve contributes to stabilization of these fragile soils through faulted vegetation cover that reduces soil erosion, maintains soil organic matter, and increased water infiltration and storage.

e) Wildlife habitat

AWR is a habitat for flora and fauna which occupy the diverse vegetation types such as grasslands, wooded grasslands, woodlands, riverine woodlands, swamp and riverine grasslands, and papyrus swamps. The variety of vegetation types, particularly the wetlands, provides a range of habitats, which enhances the potential of the reserve to maintain fauna diversity. Although poaching in the past drastically reduced large mammal populations in the reserve, the area had remained a habitat to small populations of large mammals, including Sitatunga, Uganda kob, waterbuck, bushbuck, and hippopotamus and primates such as the black and white colobus monkey, Vervet monkeys and the olive baboons.

It is home to about 122 bird species including the Pel's fishing owl. The reserve is known to have been a habitat for the Northern White Rhino (*Ceratotherium Simum Cottoni*) that became extinct mainly through illegal hunting for meat, traditional medicine and trophies. As a former habitat of the Northern White Rhino, the reserve has been evaluated for habitat suitability for possible rhino re-introduction.

3.1.2 Aesthetic Values

The reserve has beautiful sceneries that include scenes including the Nile banks and extensive grasslands (Plate 3) and wetlands that can be observed from the top of Ombi, Inde and Erave hills. Being the only wildlife reserve in West Nile, the reserve has potential for bringing tourism closer to the people of West Nile especially the areas of Ogoko and Arua which have been uplifted to town council and city status respectively. High future tourism prospects and facilities include campsites, hotels, transport services, crafts and recreational facilities. The reserve therefore has potential for being a key tourism destination in West Nile region.



Plate 3: Beautiful sceneries of Ajai grasslands

3.1.3 Cultural values

The people in West Nile region attach a lot of cultural importance to Ajai Wildlife Reserve as it houses the site of the palace of former Chief Ajai from where it derives its name. Culturally, the Madi and Alur inhabitants of the area used to hunt in the reserve for meat, horns, skins and medicine. The Madi used animal horns in Osegu, Mgbiri and Ndara/ Aguara traditional dances. Among the Alur community, the Njige, and Convoy-Rakaraka were the cultural dancers that made use of animal products such as skins and horns. The dances used to be performed by the hunters to show their bravery while the animal trophies were given to the Chief as a way of expressing loyalty.

The swamps and rivers in AWR such as Ala, Acha, Foro, Ore, Aliku, Gazi and Muzara are good fish habitats. The local communities around AWR are required to fulfill cultural procedures in order to qualify for a fishing permit from the local traditional chiefs/elders. The strong amongst within the community is that anybody not authorized by the chief carry out for fishing will not survive a snake bite, which will most likely result into death. This traditional fishing is done in the months of February and August as a climax period for the dry season each year. These beliefs ensured control on the fishing stock.

It is believed that the reserve has sites within Ombi hills for inducing rainfall through traditional rituals that are performed by some clans. The exact area is kept a secret to rival clans to guard against misuse. During periods of rain scarcity, a traditional chief is contacted to perform the rituals that are believed to be the cause of the subsegment rain.

The local communities around AWR also perform rituals to invoke the gods to help in curing certain ailments. Some of the areas within the reserve used for this purpose include Osivayiadi-Liriva area around Eranve hill and Eranga area within Ombi hills where a fig tree is aken as a home for the gods that enhance women fertility.

3.1.4 Livelihood support

AWR supports community livelihoods; during the precious GMP period, a number of MoUs were signed between OWH and communities to facilitate resource access from the reserve. The reserve is the main source for thatch grass and other building materials like fibres and poles. The wetlands and rivers are important fish breeding habitats. Given that the wetlands are tributaries to River Nile, the fish finds its way to the river. River Gazi is a key breeding area for a variety of fish species which gradually find their way to River Nile, thus enriching the fish stock. Fishing along the Nile River greatly contributes to community livelihood.

3.1.5 Research and education

AWR is a symbol of a rich culture of the local communities. Besides, the reserve has unique ecological and dynamic biodiversity conditions. All provide a potential arena for research.

3.2 Overall Management Purpose

Considering the above conservation values, the overall purpose for which AWR should be managed and conserved for the next 10 years is:

“To conserve AWR as a wildlife habitat for its ecological, cultural and aesthetic values to support peoples’ livelihoods for the present and future generations”

3.3 AWR Management Zones

This section describes the various zones in which the prescribed management activities will be implemented. In order to ensure effective management, Ajai Wildlife Reserve will be divided into 5 management zones as described below and illustrated in the zone map in Figure 3 below.

a) Administrative Zone

This zone will comprise administrative offices and outposts at Ayavu (the location of AWR Head Office) Madali, Lali and Degia Outposts. The administrative offices at Ayavu will comprise the following facilities/infrastructure:

- A standard office
- Accommodation for senior staff (Duplex)
- Accommodation for junior staff
- A standard guest house
- A water system powered by a generator (for guest house and conservation education centre)
- A standard education centre
- A reception shelter
- A water borne toilet at the reception centre
- A canteen
- A block for the armory, exhibits and stores

At Madali, Lali and Degia and other sites will be located the outposts which will comprise of the following infrastructure:

- Accommodation for staff
- Toilet and bathroom facilities
- Standard kitchens
- Boreholes

b) Tourism Zones

The tourism zone will encompass the following areas;

- i) Erarve Hill and Chief Ajai Island/palace. A standard campsite will be established and nature walk trails will be established connecting Erarve hill to Ajai Island/palace.
- ii) Nature walk trails around Ayavu HQs, Gazi river and Ajai Island
- iii) Albert Nile. The main tourism activities along the Albert Nile will include sport fishing and water tourism which will be developed connecting Ajai AWR, through Kabwoya WR to Semuliki NP along Albert Nile, Lake Albert and Semuliki River.

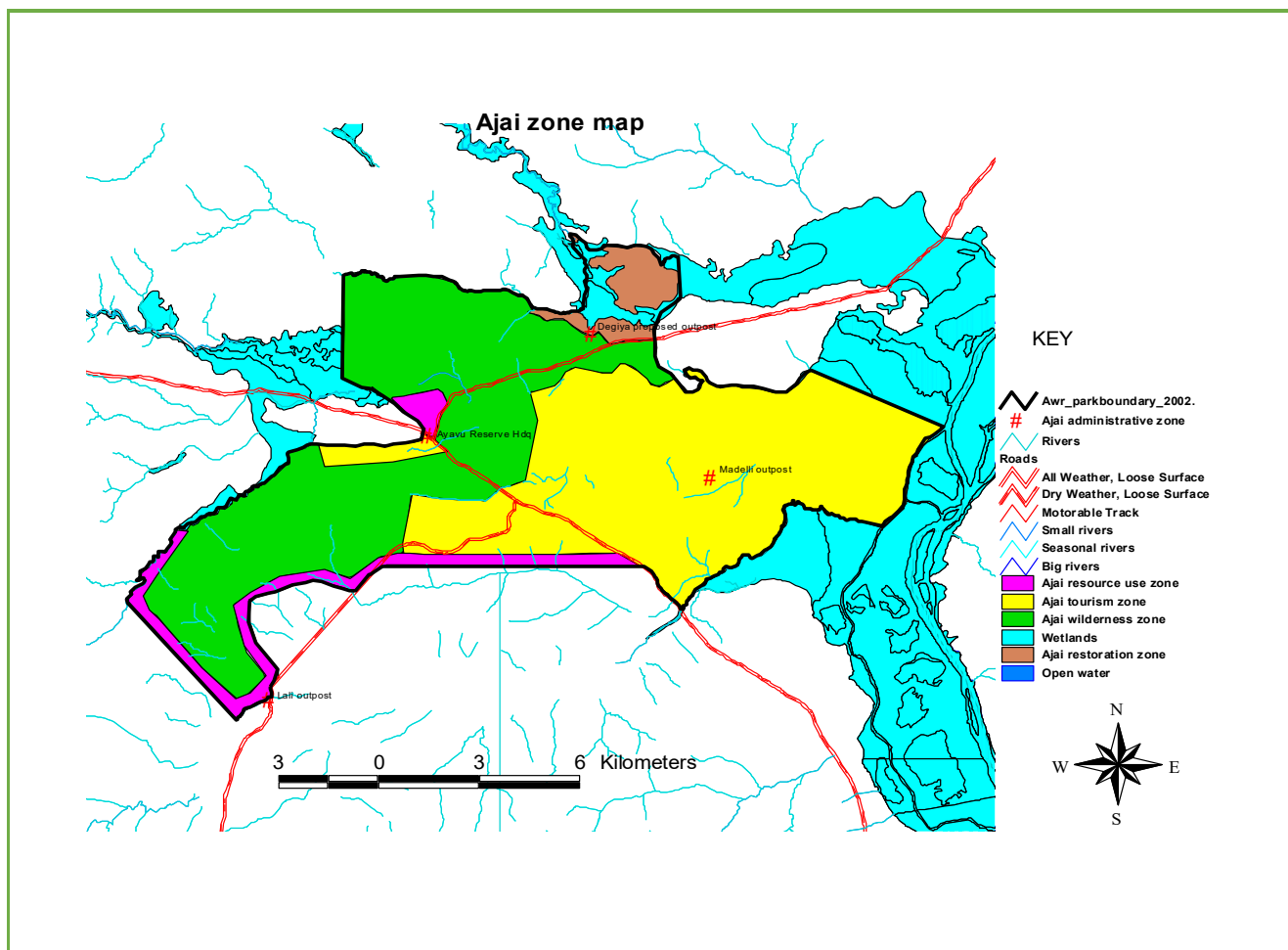


Figure 3: Map showing the management zones of AWR

iv) Ombi hills

An Eco-lodge with a bed capacity of 20 bedrooms will be concessioned out. The hills will also be used for viewing beautiful sceneries covering the wetlands along the Nile. Activities that are likely to cause damage to tourism zones such as uncontrolled resource harvesting will be prohibited with the exception of legalized sport fishing.

c) Resource use zones

Resource use zones will cover a stretch of 1km wide within the reserve boundary towards the interior. The resource use zones will be located in Ayavu-Gazi, Olali in Ogoko Sub-county, Lali in Okollo sub-county and Panduku in Pawor sub-county. Resources to be considered for access will include papyrus, reeds, brooms, grass thatch, firewood, apiary sites and medicinal herbs. Below is a summary of permitted and prohibited activities in the resource zone.

Permitted Activities:

- Resource harvesting in line with collaborative management agreements
- Research, monitoring, and authorized operations
- Accompanied visitor use

- Visitor information and interpretative services
- Fire management activities
- Research and monitoring
- Installation of bee-hives

Permitted Facilities/Infrastructure:

- Approved structures facilitating effective research, monitoring, and reserve operations
- Improved trails and bridges
- Latrines and approved garbage disposal sites
- Structures to facilitate cultural tourism initiatives supported by community residents

Prohibited Activities:

- Unaccompanied visitor at any time
- Resource harvesting not approved under a collaborative management agreement
- Cultivation
- Poaching
- Timber and poles harvesting
- Fire setting

d) Restoration Zone

Ajai AWR has situations that are incompatible with the management objectives. Some of these include marginal encroachment especially where the boundary pillars are spaced far apart. The continued settlement of the Degia community in the reserve amounts to encroachments and contradicts the management objectives of the reserve. UWA expects to have all forms of encroachments eliminated from the reserve during the period of the GMP. In addition, UWA intends to eliminate invasive plants which have invaded some areas of the reserve. The removal of encroachers and invasive plants will leave open/degraded areas in the reserve which will require to be restored. These areas will form the restoration zone covering the following areas:

- i) Degia community area,
- ii) Areas where encroachers have been evicted
- iii) Extensive areas where invasive plants are being eliminated

Permitted activities in this zone will include:

- Research and monitoring
- Restoration through planting of indigenous grass and trees
- Restoration through natural regeneration
- Fire protection activities

Prohibited activities

- Planting of exotic trees
- Planting of crops

e) Wilderness Zone

This zone will be used for conservation purposes only and will include all other areas of AWR not covered under the above zones. The zone is buffered by the resource use zone at Lali out post area and the Tourism Zones at Ayavu, Eranve and Ombi hill areas. Based on research and monitoring data, the status of this area may be changed during the period of the GMP. Below are the permitted and prohibited activities in this zone

Permitted Activities:

- Research and monitoring activities
- Overnight use by approved researchers and Reserve staff only
- Day use by visitors on designated routes
- Fire management activities

Permitted Facilities/Infrastructure:

- Improved trails and bridges in support of research, monitoring, Reserve operations, and visitor use
- Sites intended for visitor orientation, safety, and resource protection purposes
- Structures supporting Park operations and approved research
- Approved latrines and garbage disposal sites

Prohibited Activities:

- Unauthorized Resource harvesting
- Cultivation
- Overnight use other than by approved researchers and Reserve staff
- Poaching



 *Part Four*

MANAGEMENT PROGRAMS

4.1 RESOURCE CONSERVATION AND MANAGEMENT PROGRAM

Ajai Wildlife Reserve is home to a variety of flora and fauna. These resources have however been negatively affected by human activities over many years.

This section describes boundary management, control of illegal resource use, restoration and regional environmental management issues. It also examines the threats, and prescribes actions to counter them.

Program objective: To improve and maintain the ecological integrity of AWR.

The program will aim at achieving the following key outputs;

Output 1: Illegal activities eliminated from AWR by 2031

Issues and Rationale

Wildlife in AWR has been affected by illegal activities that include poaching and unregulated resource extraction of timber and charcoal. In the 1930s, hunting in Ajai area was done as a tradition before the place was declared a game sanctuary in 1937. This was followed by controlled hunting authorized by the then Chief Ajai. Between 1970s and 1980s there was uncontrolled poaching facilitated by lawlessness and civil wars. Poaching was done by soldiers and locals using guns, spears and arrows targeting large to medium-sized mammals such as the Buffaloes, Hippos, Waterbucks, Uganda Kob and Rhinos. The white rhinos were wiped out of the reserve during this period.

The then Game Department lacked adequate resources and power to handle the escalating illegal activities. Since the handover of the reserve to UWA in 1996, there has been adequate control of illegal activities. However, records show that poaching, illegal fishing, illegal timber harvesting, charcoal burning and uncontrolled bush fires still occur (Table 2 and Figure 4).

Table 2: Summary table of illegal activity observations 2007-June 2019

Type of illegal activity	Number of incidents	Encounter rates (/ km)
Encroachment - Human Activity	14	0.001
Hunting	444	0.029
Fishing	50	0.003
NTFP collection:		
Honey	13	0.001
Mushroom	1	0.000
Medicinal Plants	3	0.000
Poles	21	0.001
Grass	6	0.000
Timber harvesting:		
Logs - Timber - Human Activity	9	0.001
Firewood - Timber - Human Activity	8	0.001
Stump - Timber - Human Activity	14	0.001
Charcoal - Timber - Human Activity	95	0.006

(Source: UWA's AWR Illegal activity report from 2007 to June 2019)

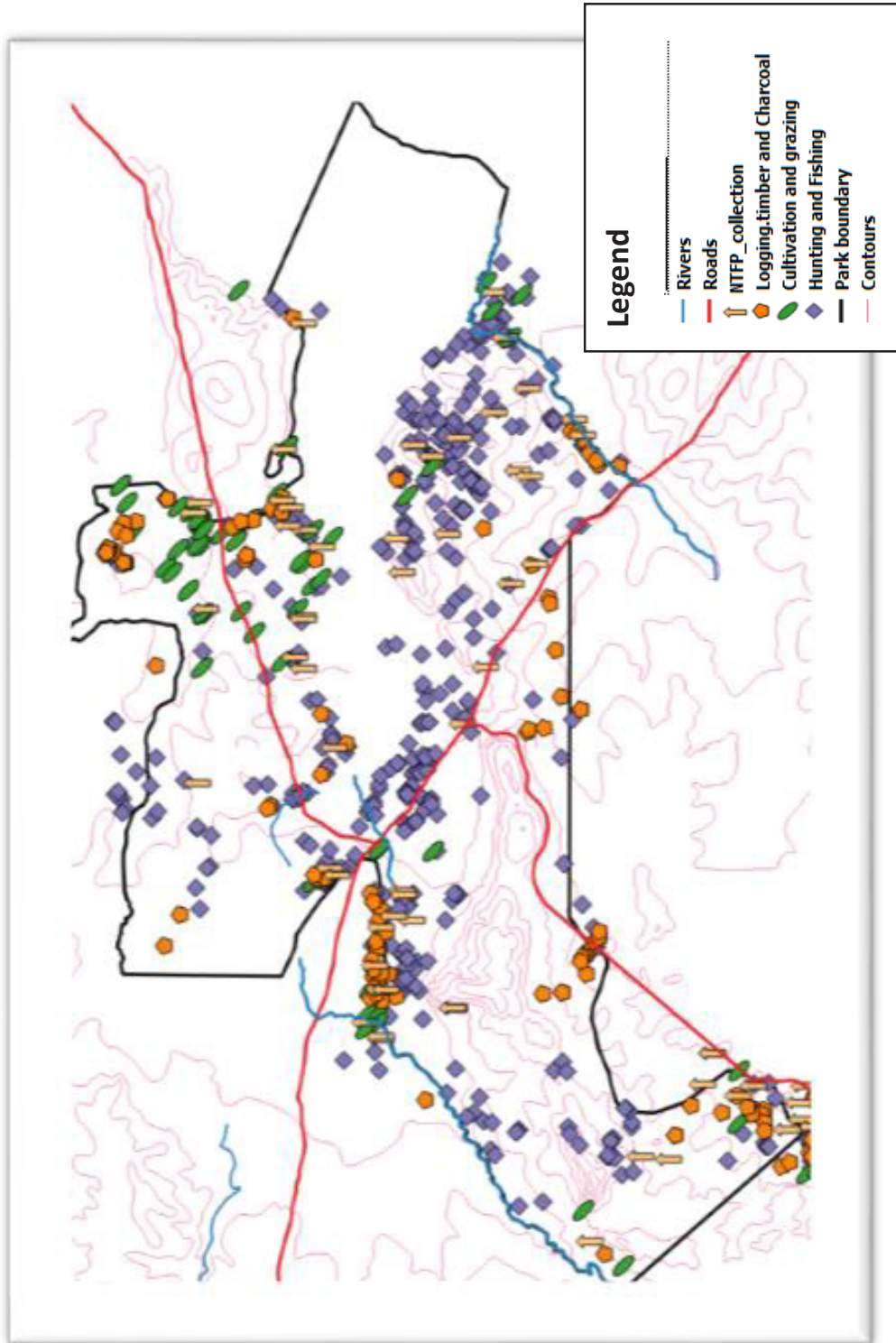


Figure 4: Distribution of various illegal activities in AWR 2007-2019

(Source: UWA's AWR illegal activities report 2007-2019)

The 2007-2019 illegal activity report further indicates that use of wire snares dominated the hunting activities with 245 wire snares encountered over the same period. The same report indicates that 24 and 26 people were arrested while poaching/ hunting and fishing respectively out of the total of 66 people arrested. These figures demonstrate that poaching and illegal fishing are on top of the illegal activities.

Management Actions

In order to address the issue cited above, UWA will implement the following actions;

Summary of management actions

No	Actions	Who	Others	When
1	Conduct awareness to the community and other stakeholders on the importance of conserving the reserve.	WIC, AWCC,	CCR	1-10
2	Establish wildlife clubs in schools around the reserve.	WIC, AWCC	Management Partner	1-10
3	Establish community wildlife associations around the reserve.	WIC, AWCC	Management Partner	1-10
4	Develop and implement a fire management Plan for the reserve	WIC, WEM	EMR	Year 1
5	Re-enforce the boundary with more pillars and live markers.	Chief Warden, WIC, AWCC	DC	Year 3
6	Intensify patrols based on intelligence information	WLE	CW, MLE	1-10

Output 2: Human settlements are eliminated from the reserve

Issues and Rationale

Under the Protected Areas System Plan, UWA surveyed and demarcated the boundaries of AWR in 2004. However, it was not possible to redesign the borders of the Reserve to exclude Madeli and Degia given their central location. The district of Arua in conjunction with UWA identified enough land next to the reserve to resettle the Degia families at Mile 34 along Wadelia-Ogoko road stretching to Lali area along the southern section of the reserve boundary. The Madeli families were supposed to be relocated to Degiya village next to the Northern reserve boundary along Inde-Rhino camp road. It was also agreed that the families would be compensated for their properties at the time of relocation.

During the last GMP period, the relocation of the Madeli families was achieved. However, although a decision to resettle 11 households of the Degiya community was reached and actions incorporated in the last GMP, the resettlement never took place. The community claimed that culturally the land identified for their settlement was not suitable because it was occupied by Luo speaking people and this would dilute their culture of the Degia community if they mixed up with the Luo people. The Degia community has continued to occupy the reserve and freely conducting activities such cultivation that contradict the conservation objectives of the reserve. The Degia human population has also continued to grow, posing threats of increased pressure on reserve resources. During data collection, the boundaries of the confinement area were assessed. No expansion of encroachment was found beyond the confinement area. There are also cases of marginal encroachment in areas where boundaries are unclear especially where the boundary pillars are spaced far apart from each other.

Management Actions:

UWA in conjunction with the leadership of the newly created district of Madi-Okollo will implement the following actions;

Summary of management actions

No	Actions	Who	Others	When
1	Sensitize the Degia Community to relocate elsewhere	Chief Warden, WIC	DDCC	Year 1
2	Relocate encroachers from the reserve	Chief Warden, WIC	DDFO	Year 2
3	Conduct restoration assessments	CW, WIC, WEM	EMRU	Year 3
4	Restore the encroached area	CW, WIC, WEM	EMRU	Year 4
5	Monitor the restored area	WIC, WEM	LE, EMR	Year 4 - 10

4.2 ECOLOGICAL MONITORING AND RESEARCH PROGRAM

Monitoring and research can be carried out in any zone of the reserve. AWR is faced by a variety of problems and issues which management must address in order to conserve the reserve's species diversity and varied ecosystems.

However, effective action is constrained by lack of relevant information to guide decision-making. Knowledge can best be expanded by research directed specifically towards relevant problems and issues. This program describes actions necessary to address these issues.

Overall program objective: To ensure that management decisions in AWR are based on scientific information.

Output 1: Research based information generated for decision making. Issues and Rationale. There are various ecological and social-economic information needs critical to the management of AWR that should be generated for informed decision-making and management of the reserve. Currently, the information available about AWR is still very limited. The 2007-2017 AWR GWP indicates that there are 122 bird species in AWR. There is need to know whether the status quo still remains or there are changes that have occurred over the last 10 years. The 2018 State of Wildlife Resources in Uganda did not cover AWR. Although information from the regular monitoring activities indicates that the population of some wildlife is increasing, this is inadequate. There is need for detailed studies to this effect. Key research areas include wild animal extinctions, the feasibility for translocation/re-introduction of wildlife species, vegetation changes, invasive species, as well as the overall species diversity of the reserve. The question of economic importance of AWR in its current state needs to be answered based on research information.

Management Actions

In order to address these issues, UWA will implement these actions;

Summary of management actions

No	Actions	Who	Others	When
1	Translocate wildlife species based on study results (e.g. White Rhinos, cobs, Buffaloes, water bucks, Oribi).	EMR, VU, CW, WIC	Partners, CM	Year 3
2	Conduct a study on the impact of AWR on the neighboring community	EMRU, CCU	Individual Researchers Research inst.	Year 2
3	Conduct regular wildlife surveys to determine the population trends	EMRU	Individual Researchers Research institutions	Year 1, 3, 5, 7, 9
4	Conduct biodiversity inventories in AWR	EMRU	Individual Researchers Research institutions	Year 2, 7
5	Conduct regular ecological monitoring of key ecosystems in AWR	WEM, EMR	Other stakeholders	Year 1 - 10
6	Conduct regular Ranger Based data collection and analysis	WEM, EMR, WIC, LE		Year 1 - 10

Output 2: Alien and invasive plants eradicated from AWR

Issues and Rationale

Invasive plants have become a major problem in Uganda's protected areas including AWR. The plants have capacity to cover up land areas of the protected area in relatively short periods compared to the natural colonization processes that allow gradual succession of plant species. Conditions for the survival of invasive plants are being made favorable by climate change whereby the invasive plants have better capacity to survive than other plant in the protected areas. During the field reconnaissance, some alien and invasive plants were identified in AWR. The common invasive plants include *Harrisonia abyssinica* (Plate 4) that was found thriving and fast spreading in many areas of the reserve covered by the reconnaissance. Some of the areas where the plant was sighted include Eranve hill, around Ayavu AWR Headquarter and along Ayavu-Rhino Camp road. Invasive plants damage wildlife habitats and reduce on forage for wildlife since many of them are not palatable to wildlife.

The water hyacinth is thriving in the Nile-Gazi delta and is likely to spread to other tributaries of the Nile that drain AWR if not controlled. The water hyacinth is an impediment to the development of the proposed sport fishing along the Nile and water tourism from Ajai AWR, though Kabwoya WR to Semuliki NP along Albert Nile, Lake Albert and Semuliki River. Alien species such as *Senna* species also exists in many areas including Ayavu and Chief Ajai's palace.

Management Actions

In order to restore the integrity of AWR, UWA will implement the actions below;

Summary of management actions

No	Actions	Who	Others	When
1	Identify and map alien and invasive plants in AWR	WEM, WIC	EMRU	Year 1
2	Remove alien and invasive plants from AWR	CW, WEM, WIC,	EMRU	Year 1 - 10
3	Work with Fisheries Department to remove the water hyacinth from the Nile-Gazi delta	CW, WEM, WIC,	EMRU	Year 3-10
4	Conduct regular monitoring of the sites where alien and invasive plant species have been removed	WEM, WIC		Year 2-10



Plate 4: *Harrisonia abyssinica*, one of the invasive plants in AWR

4.3 CAPACITY DEVELOPMENT PROGRAM

AWR will be able to achieve its conservation objectives when staff trained, highly motivated, and well facilitated with the required requirement and housing.

This section describes programmes that will lead to the achievement of this goal and examines the operational challenges in-terms of park infrastructure, staffing and logistical requirements for the effective management of the reserve.

Reserve infrastructure include offices, staff accommodation, access routes for easy deployment and many other such facilities.

Program objective: To put in place adequate, skilled and motivated staff and appropriate infrastructure.

The program will focus on two outputs:

- i) Adequate, skilled and motivated work force in place
- ii) Adequate, appropriate and standard infrastructure, equipment and vehicles in place

Output 1: Adequate, skilled and motivated work force in place

Issues and Rationale

AWR has a total area of 166 sq. km, and the present human manpower against the area coverage is inadequate (Table 3). Lali and Madali, the only outposts, are manned by 2 and 3 Rangers respectively, making it difficult to conduct effective patrols. For effective patrols, a minimum of seven rangers is required at any one given time and two would remain to guard the camp. Besides, the rangers have to move far distances for patrols because of the limited number of outposts. Besides, tools and equipment such as motorcycles, vehicles, and communication sets that motivate staff and make work effective are old, inadequate or not available. The staff is also not adequately exposed to new wildlife management trends that enhance their knowledge and skills.

Table 3: Ajai current staffing (manpower strength and gaps)

No.	Position	Current Number	Required	Optimum Number
1	Warden In-charge	1	0	1
2	Asst. Warden community conservation	0	1	1
3	Headquarter Law enforcement Rangers	5	7	12
4	Community Conservation Rangers	1	7	8
5	Tourism Guides	0	4	4
6	Intelligence Staff	1	0	1
7	Ecological monitoring Ranger	1	0	1
8	Account clerk	1	0	1
9	Driver	1	2	3
10	Office attendant	0	1	1
11	Camp attendant (Porters)	0	2	2
12	Madali ranger outpost	3	3	7
13	Lali ranger outpost	2	5	7
14	Keleruva (Degia)	0	7	7
Grand Total		16	40	56

Management actions

UWA will implement the actions below to address the issues above;

Summary of management actions

No	Actions	Who	Others	When
1	Recruit additional staff from the current 16 staff to 53.	HRU, CW		Year 1,3,6,9
2	<i>Procure field equipment and materials</i>	<i>CW, WIC</i>	<i>PM</i>	<i>Year 1</i>
a)	Procure a new set of communication equipment	CW, WIC	PM	Year 1
c)	Establish a weather station	CW, WIC, WEM	Partners	Year 1
d)	Procure 2 motorcycles for H/Q staff and 1 for each of the three out posts (5)	CW, WIC	PM	Year 1
e)	Procure 1 field vehicle (single cabin Land cruiser for law enforcement); 1 double cabin Hillux (for community conservation)	ED, PM		Year 1
	Assorted field equipment			Year 1, 6
3	Provide recognition awards for best performers	CW, WIC		Year 1 -
4	Conduct study tours for staff	CW, WIC, WCC, WA		Year 1, 5, 7, 9

Output 2: Adequate, appropriate and standard infrastructure in place

Issues and Rationale

Staff in Ajai Wildlife operate in poor and inadequate infrastructure. At Ayavu AWR headquarters all the structures including the office block, the staff accommodation, and reception centre are either dilapidated or inappropriate (Plate 5 & 6). Junior staff resides in grass thatched huts. The guest house is a substandard round hut not befitting for a guest house of modern times. There is lack of a standard education centre which is curtailing conservation education programmes.



Plate 5: AWR dilapidated reception centre (Left) and Offices (on the Right)



Plate 6: AWR guest house at Ayavu HQs (Left) and Junior staff accommodation at Ayavu (Right)

Accommodation for staff at the outposts is inadequate to accommodate the present and purposed staff. At Madali Lai and Keleruva (Degia) outposts appropriate infrastructure is required to house the staff numbers that have been indentified under Table 3. Such facilities will include accommodation blocks, kitchens, toilets and bath rooms. The stations lack standard solar lighting systems, making it difficult also for staff to charge their communication equipment to facilitate quick information dissemination. Water supply for Madali and Ayavu headquarters is inadequate.

Management Actions

UWA management will implement the following actions in order to address the above issues.

Summary of Actions

No	Actions	Who	Others	When
Ajai WR HQs				
1	Demolish old and dilapidated buildings	CW, WIC	WE	Year 3
2	Construct a standard office	CW, WIC, PM	WE	Year 1
3	Construct one structure for senior staff (Duplex)	CW, WIC, PM	WE	Year 1
4	Construct 27 rooms for existing junior staff	CW, WIC, PM	WE	Year 1
5	Construct a standard guest house with 6single and 3double rooms	CW, WT, WIC, PM	BDM	Year 3
6	Put in place a water system powered by a generator (for guest house and conservation education centre)	CW, WIC,	WE	Year 3
7	Construct a standard education centre (Accommodation, offices, multipurpose hall, other amenities)	CW, WIC, WCC		Year 4
8	Construct a reception shelter (with Clerks office, Guides office and reception area)	CW, WIC, WT	WE	Year 2
9	Construct a water borne toilet at the reception centre (4 stance toilet)	CW, WIC, PM, WT		Year 2
10	Construct a separate canteen	CW, WIC, PM, WT	WE	Year 2
11	Construct a block for the armory, exhibits and stores	CW, WIC, WLE, PM		Year 2
12	Conduct a feasibility study for the proposed road from Rhino camp to Pakwach road			Year 4
13	Construct a road from Rhino camp to Pakwach road			Year 6
Madali out Post				
1	Construct 2 additional Junior staff rooms	CW, WIC, PM	WE	Year 2
2	Construct a new toilet facility	CW, WIC, PM	WE	Year 2
3	Construct a kitchen with two rooms for staff	CW, WIC, PM	WE	Year 2
4	Provide a borehole to supply water to staff	CW, WIC, PM	WE	Year 2
5	Provide solar lighting system to the outpost	CW, WIC, PM	WE	Year 2

Lali outpost				
1	Construct three additional junior staff rooms	CW, WIC, PM	WE	Year 2
2	Construct new toilet and bathroom facility	CW, WIC, PM	WE	Year 2
3	Construct a standard kitchen	CW, WIC, PM	WE	Year 2
4	Provide solar lighting system to the outpost	CW, WIC, PM	WE	Year 2
Degia Outpost				
1	Construct six Junior staff rooms	CW, WIC, PM	WE	Year 2
2	Construct toilet and bathroom facility	CW, WIC, PM	WE	Year 2
3	Construct a standard kitchen	CW, WIC, PM	WE	Year 2
4	Provide a borehole to supply water to staff	CW, WIC, PM	WE	Year 2
5	Provide solar lighting system to the outpost	CW, WIC, PM	WE	Year 2

4.4 COMMUNITY CONSERVATION PROGRAM

Protected areas cannot be managed in isolation of the communities that surround them. These communities incur costs and derive benefits from living adjacent to the protected areas. In the increasingly decentralized system of governance in Uganda, their voice is very relevant. Activities in this programme will be concentrated in the Resource use zone and the main objective of this programme is to improve park-community relations and ensure the conservation of the environment in general and AWR in particular.

Program Objective: To enhance community benefits and appreciation of conservation.

The program aims at the following specific outputs:

Output 1: Mechanisms for controlling HWCs implemented

Issues and Rationale

Problem animals and vermin are the major source of human wildlife conflicts around protected areas. The conflicts range from crop raiding cross-transmission of diseases, unidentifiable attacks resulting into human death or injuries, or death and injuries to wildlife. Some of the conflicts also arise because the local community members do not have adequate knowledge on animal behavior and how to appropriately act to situations. Around Ajai Wildlife Reserve the common vermin include olive baboons, Vervet monkeys and bush pigs among others. With the observed, reported and expected increase in wildlife populations, human-wildlife conflicts are bound to increase. While the Uganda Wildlife Act 2019 provides for compensation for the damages caused, the GMP prescribes activities to minimize Human-Wildlife Conflicts.

Management Activities

As part of her commitment to minimize Human-Wildlife Conflicts, UWA will implement the following actions:

Summary of management actions

No	Actions	Who	Others	When
1	Provide technical support in Controlling vermin	CW, PVO, WIC, WCC	CCU	Year 1,6
2	Conduct awareness on animal behavior.	WIC, WCC	CCU, Other Stake holders	Year 1 - 10
3.	Erect electric fences around HWCs hotspots	CW, HWM, WIC	ED	Year 1 - 10

Output 2: Community livelihood alternatives enhanced

Issues and Rationale

AWR is surrounded by local communities who live in poverty characterized by limited and very low household incomes. The local communities depend on small-scale subsistence farming which is insufficient to support household needs. As a strategy for generating revenues that would support some community projects, UWA offered a concession in AWR, however this has not yielded the intended results. Currently, the local communities lack alternative sources of livelihoods especially income. This situation was compelled them to undertake charcoal burning which has led to degradation of the environment on the private land. The pressure and demand for resources such as charcoal, firewood, poles and grass thatch has now shifted to the reserve creating resource use conflicts between the local community and the AWR managers.

Management Actions

UWA in conjunction with the local communities and other stakeholders will implement the following actions;

Summary of management actions

	Actions	Who	Others	When
1	Identify and promote suitable income generating projects for the local community	CW, WIC, WT, WCC	BDM	Year 1- 10
2	Promote community Tourism outside the reserve	WIC, WT,	DTO	Year 1-10
3	Promote tree planting outside the reserve	WIC, WCC	NFA, other stakeholders	Year 1 - 10
4	Conduct community exchange visits for learning	CW, WIC, WCC	other stakeholders	Year 2, 4, 6, 8, 10
5	Review the concessioner agreement	CO, CW, WIC	Mgt Partner, LoG	Year 1, 6
6	Implement the recommendations of the concession Agreement review	CW, WIC, WC	Mgt Partner	Year 1-10

Output 3: Resource access regulated

Issues and Rationale

Due to the environment degradation in areas outside AWR, there is scarcity of vital resources on which communities depend for the livelihoods. Such resources include firewood, poles, fibers, grass thatch, fish and medicinal herbs. From the 2007-2017 patrol reports, it is clear that the pressure on the reserve for these resources is building up. During the 2007-2017 GMP period, some resource assess MoUs were developed to regulate resource access and these require to be enhanced.

Management Actions

In order to address the issues above, UWA will implement the following actions:

Summary of management actions

No	Actions	Who	Others	When
1	Conduct resource assessment to determine availability of the resources	WIC, WCC, WEM	EMRU, Other stakeholders	Year 2, 5, 8
2	Review and update expired resource assess MoUs	CW, WIC, WCC, WEM	Community Resource users	Year 1,3,5,7,9
3	Monitor resource off-take	WCC, WIC, WEM		Year 1-10

Output 4: Relations between AWR management and the local community improved

Issues and Rationale

During the consultations, it was realized that the relationship between UWA staff and the local community was not at its best due inadequate knowledge and information about the value of conserving AWR. Most community representatives felt that AWR belongs to UWA and do not appreciate that UWA conserves it for and on behalf of the citizens. It was also realized that people grow up with this mentality right from childhood. Conservation efforts generally begin and end within the confines of AWR with limited initiatives in any on private land.

Management Actions

UWA will implement the following actions;

Summary of Management Actions

No	Actions	Who	Others	When
1	Develop and implement a conservation education programme (Hosting at the CEC)	WIC	WCC	Year 1-10
2	Procure conservation education materials	WIC	WCC	Year 1
3	Sensitize local communities and other stakeholders on the importance of conserving Ajai Wildlife Reserve (Outreach)	WCC	WIC, CCR	Year 1-10
4	Conduct conservation out-reach activities in surrounding schools	WCC	WIC, CCR	Year 1-10
5	Support self-community conservation initiatives	WCC	WIC, CCRs	Year 1-10

4.5 TOURISM DEVELOPMENT AND FINANCIAL SUSTAINABILITY PROGRAM

This program highlights the major actions through which the protected area will improve revenue generation. There are measures in place to increase the revenue but these need to be strengthened. A number of new proposals have been put forward to improve tourism in the area. However, these proposals have been included taking into consideration the limits of acceptable use. Proposals to promote community-based tourism are also included in this program.

Program objective: To generate and manage revenues from conservation activities in and around AWR.

Output 1: Tourism potentials are identified, developed and promoted

Ajai Wildlife Reserve is endowed with potential tourism attractions. These include the beautiful scenery that can be observed from the high-laying areas such as Eranve, Ombi and Inde hills, rich cultural attachment to the local traditions of the people of West Nile dating back from the time of Chief Ajai and beyond, and the wildlife especially birds and plants. The Nile and its tributaries located in AWR and its connectivity to Semuliki National Park through Lake Albert present opportunities for development of water tourism and sport fishing. The reserve has potential to regain its glory as a habitat of the white rhinos. This plan provides for deliberate actions to re-introduce the white rhino as will be documented in the habitat suitability studies that are ongoing. The plan also calls for re-introduction of other wildlife species. The location of AWR as the only wildlife protected area in West Nile provides it with the opportunity and monopoly to develop into a major tourism destination in the region. The growth of urban centres such as Arua which has been granted a city status and the Madi-Okollo district headquarter that is located just next to AWR headquarter at Ayavu provide opportunities for AWR to develop into a major tourist destination and recreation centre for urban dwellers.

These potentials and opportunities have not been adequately tapped into and this has left AWR as a lesser-known tourism destination and of little economic importance to the surrounding community. With the growing population and urbanization, it is crucial that the tourism and revenue generation potential is tapped, utilized and demonstrated to guard against any interests to convert the reserve to other land uses.

Management actions

In order to improve AWR's status, UWA management will implement the actions below;

Summary of management actions

No	Actions	Who	Others	When
1	Conduct a viability study of potential tourism sites/attractions	WIC, WT,	EMRU	Year 1
2	Sport fishing along the Nile	WIC, WT		Year 1-10
3	Develop water tourism from Ajai WR, through Kabwoya WR to Semuliki NP along Albert Nile, Lake Albert and Semuliki River.	CW, BDM, WIC, WT		Year 7
3	Establish a standard camp site at Erarve hill	CW, WIC, WT		Year 2
4	Establish nature walk trails from Erarve Hill to the Gazi wetland and Ajai Island	CW, WIC, WT		Year 1
5	Establish Ajai cultural centre			6
6	Increase and maintain the short guided trails around Ayavu	CW, WIC, WT		Year 1
7	Establish a visitor information centre at Ayavu	DTBS, BDM, CW, WIC, WT		Year 3
8	Concession out a 20 bedroom capacity Eco-lodge at Ayavu	DTBS, CO, CW, WIC		Year 6-7
9	Concession out a 20 bedroom capacity Eco-lodge at Ombi Hill	DTBS, CO, CW, WIC		Year 3-4
10	Promote AWR at National and International tourism markets	DTBS, CW, WIC, WT	BDM, Manager Sales	Year 1

4.6 GOVERNANCE AND CORPORATE AFFAIRS PROGRAM

This program focuses on the relationship between the reserve management and all the relevant stakeholders. It will also put emphasis on promoting the corporate social responsibility of Uganda Wildlife Authority.

Program objective: To enhance stakeholder relations and improve the public image of AWR.

Output 1: Stakeholder and staff coordination and information sharing enhanced

Issues and Rationale

This GMP has come at a time when Madi-Okollo county in which the reserve is located has been uplifted to a district status. This development is likely to trigger the creation of other administrative units in form of town councils and sub-counties. This has created and will create other layers of stakeholders and decision makers which AWR management has to relate with almost on a daily basis. As the only wildlife protected area in West Nile Region, AWR draws stakeholders-interests beyond Madi-Okollo district in which it is located. AWR management will therefore have to find ways for wider stakeholder coordination for effective management of the reserve.

Management actions

UWA management will implement the following actions;

Summary of management actions

No	Actions	Who	Others	When
1	Conduct regular stakeholder coordination meetings	CW, WIC, WCC	CCU	Year 1-10
2	Conduct regular staff meetings	WIC	CW	Year 1-10
3	Conduct regular supervisory field visits	CW, WIC		Year 1-10
4	Participate in selected district and sub-county meetings	CW, WIC, WCC		Year 1-10
5	Organize and participate in conservation events	WIC, WCC	CW	Year 1-10
6	Participate in public events	CW, WIC, WCC	CM	Year 1-10
7	Promote corporate social responsibility activities	CW, WIC, WCC	CM	Year 1-10





Part Five
COSTING

Specific Objectives	Actions	Input (Units)	Unit Cost	Y1 (000)	Y2 (000)	Y3 (000)	Y4 (000)	Y5 (000)	Y6 (000)	Y7 (000)	Y8 (000)	Y9 (000)	Y10 (000)
Resource Conservation and Management													
To ensure the illegal activities are eliminated	Conduct awareness to the community and other stakeholders on the importance of conserving the reserve.	Meetings	<i>Covered under community conservation</i>										
		Wildlife club engagements	13,080	13,080	13,342	13,608	13,881	14,158	14,441	14,730	15,025	15,325	15,632
		Wildlife associations engagements	8,000	8,000	8,160	8,323	8,490	8,659	8,833	9,009	9,189	9,373	9,561
	Develop and implement a fire management Plan for the reserve		15,000	15,000									
	Re-enforce the boundary with more pillars and live markers.		250,000			250,000							
To ensure that there are no human settlements in the reserve	Sensitize the Degiya Community to relocate elsewhere	Stakeholders meetings, staff facilitation, compensation to 11 families	222,076										
	Evict encroachers from the reserve		50,000		50,000								
	Conduct restoration assessments	Staff facilitation	8,410			8,410							
	Restore the encroached area	Labour, facilitation	5,000				5,000						
	Monitor the restored area	Staff facilitation	2,304				2,304	2,350	2,397	2,445	2,494	2,544	2,595
Ecological Monitoring and Research													

Specific Objectives	Actions	Input (Units)	Unit Cost	Y1 (000)	Y2 (000)	Y3 (000)	Y4 (000)	Y5 (000)	Y6 (000)	Y7 (000)	Y8 (000)	Y9 (000)	Y10 (000)
To generate research based information for decision making	Translocate wildlife species based on study results (e.g. White Rhinos, cobs, Buffaloes, water bucks, Oribi).	Equipment, Veterinary materials, Capacity building, Staff facilitation, Boma construction	1,600,000			1,600,000							
	Conduct a study on the impact of AWR on the neighboring community	Consultancy	90,000		90,000								
	Conduct regular wildlife surveys to determine the population trends	Staff facilitation	8,410		8,410		8,578			8,750			8,925
		Fuel	30,000		30,000		30,600			31,212			31,836
	Conduct biodiversity inventories in AWR	Consultancy	90,000			90,000						91,800	
		Staff facilitation	8,410			8,410						8,578	
	Conduct regular ecological monitoring of key ecosystems in AWR	Staff facilitation	8,410	8,410	8,578	8,750	8,925	9,103	9,285	9,471	9,660	9,854	10,051
	Carry out regular Ranger Based data collection and analysis	Staff facilitation	2,190	2,190	2,234	2,278	2,324	2,371	2,418	2,466	2,516	2,566	2,617
To eradicate alien and invasive plants from AWR	Identify and map alien and invasive plants in AWR	Staff facilitation	1,040	1,040									
	Remove alien and invasive plants from AWR		10,000	10,000	10,200	10,404	10,612	10,824	4,000,000	4,080,000	4,161,600	4,244,832	4,329,729

Specific Objectives	Actions	Input (Units)	Unit Cost	Y1 (000)	Y2 (000)	Y3 (000)	Y4 (000)	Y5 (000)	Y6 (000)	Y7 (000)	Y8 (000)	Y9 (000)	Y10 (000)
	Work with Fisheries Department to remove the water hyacinth from the Nile-Gazi delta	Hiring equipment	150,000			150,000	153,000	156,060	159,181	162,365	165,612	168,924	172,303
	Conduct regular monitoring of the sites where alien and invasive plant species have been removed	Staff facilitation	8,410		8,410	8,578	8,750	8,925	9,103	9,285	9,471	9,660	9,854
Capacity development													
Motivated workforce	Recruit additional staff from the current 16 staff to 53												
	Advert	9 radio adverts	2,700	2,700									-
		Staff facilitation(2 staff + transport)	600	600		612			624			637	
	Shortlisting	Meetings (Refreshments)	500	500		510			520			531	
		Facilitation for 5 staff	1,400	1,400		1,428			1,457			1,486	
	Interviews	Refreshments	300	300		306			312			318	
		Facilitation(5 Staff and medical teams)	640	640		653			666			679	
	Training		2,000	2,000		2,040			2,081			2,122	
	Sub Total		8,140	8,140	-	5,549	-	-	5,660	-	-	5,773	-
Procure field equipment and materials													
	Procure a new set of communication equipment												
	Hand held Radios(8)		6,400	6,400									
	Base stations (4)		8,000	8,000									

Specific Objectives	Actions	Input (Units)	Unit Cost	Y1 (000)	Y2 (000)	Y3 (000)	Y4 (000)	Y5 (000)	Y6 (000)	Y7 (000)	Y8 (000)	Y9 (000)	Y10 (000)
	Repeater station(1)		30,000	30,000									
	Radio batteries(5)	Heavy duty batteries	12,500	12,500					12,750				
	Solar equipment (5)	Solar panels, control systems, cables	5,000	5,000					5,100				
	Establish a weather station	Lump sum	20,000	20,000									
	Procure 2 motorcycles for H/Q staff and 1 for each of the three out posts (5)		75,000	75,000									
	Procure 1 field vehicle (single cabin Land cruiser)(for law enforcement); 1 double cabin Hillux (for community conservation)		500,000	500,000									
	Other assorted field equipment	Tents, water bottles, backpacks, binoculars, cameras	10,500	10,500					10,500				
	Sub Total		667,400	667,400	-	-	-	-	28,350	-	-	-	-
	Provide recognition awards for best performers	Refreshments	600	600	612	624	637	649	662	676	689	703	717
		Staff Facilitation	400	400	408	416	424	433	442	450	459	469	478
			6,000	6,000	6,120	6,242	6,367	6,495	6,624	6,757	6,892	7,030	7,171
	Sub Total		7,000	7,000	7,140	7,283	7,428	7,577	7,729	7,883	8,041	8,202	8,366
	Conduct study tours for staff		15,000	15,000		15,300		15,606		15,918		16,236	

Specific Objectives	Actions	Input (Units)	Unit Cost	Y1 (000)	Y2 (000)	Y3 (000)	Y4 (000)	Y5 (000)	Y6 (000)	Y7 (000)	Y8 (000)	Y9 (000)	Y10 (000)
Infrastructure	Ajai WR HQs												
	Demolish old and dilapidated buildings	Hiring a wheel loader and Tipper	10,000			10,000							
	Construct a standard office	Construction costs	200,000	200,000									
	Construct one structure for senior staff (Duplex)	Construction costs	300,000	300,000									
	Construct 27 rooms for existing junior staff	Construction costs	900,000	900,000									
	Construct a standard guest house with 6single and 3double rooms		450,000			450,000							
	Put in place a water system powered by a generator (for guest house and conservation education centre)		200,000			200,000							
	Construct a standard education centre	Accommodation, offices, multipurpose hall, other amenities	1,500,000				1,500,000						
	Construct a reception shelter	Clerk's office, Guides office and reception area	200,000		200,000								
	Construct a water borne toilet at the reception centre	4 stance	50,000		50,000								
	Construct a separate canteen		50,000		50,000								
	Construct a block for the armory, exhibits and stores		70,000		70,000								

Specific Objectives	Actions	Input (Units)	Unit Cost	Y1 (000)	Y2 (000)	Y3 (000)	Y4 (000)	Y5 (000)	Y6 (000)	Y7 (000)	Y8 (000)	Y9 (000)	Y10 (000)
	Conduct a feasibility study for the proposed road from Rhino camp to Pakwach road	Consultancy	90,000				90,000						
	Construct a road from Rhino camp to Pakwach road	Opening road per km	300,000						600,000				
			4,320,000	1,400,000	370,000	660,000	1,590,000	-	600,000	-	-	-	-
	Madali out Post												
	Construct 2 additional Junior staff rooms		30,000		30,000								
	Construct a new toilet facility	Pit latrine with bathrooms	13,000		13,000								
	Construct a kitchen with two rooms for staff		10,000		10,000								
	Provide a borehole to supply water to staff		15,000		15,000								
	Provide solar lighting system to the outpost		9,000		-	9,000							
			77,000	-	68,000	9,000	-	-	-	-	-	-	-
	Lali outpost												
	Construct three additional Junior staff rooms		45,000			45,000	-						
	Construct new toilet and bathroom facility		13,000			13,000	-						
	Construct a standard kitchen		10,000			10,000	-						

Specific Objectives	Actions	Input (Units)	Unit Cost	Y1 (000)	Y2 (000)	Y3 (000)	Y4 (000)	Y5 (000)	Y6 (000)	Y7 (000)	Y8 (000)	Y9 (000)	Y10 (000)
	Provide solar lighting system to the outpost		9,000			-	9,000						
			77,000	-	-	68,000	9,000	-	-	-	-	-	-
	Degia Proposed Outpost												
	Construct six Junior staff rooms		180,000		180,000								
	Construct toilet and bathroom facility		13,000		13,000								
	Provide a borehole to supply water to staff		15,000		15,000								
	Construct a standard kitchen		10,000		10,000								
	Provide solar lighting system to the outpost		9,000		-	9,000							
			227,000	-	218,000	9,000	-	-	-	-	-	-	-
Community Conservation													
To implement mechanisms for controlling HWCs	Provide technical support in Controlling vermin	Training vermin guards	6,000	6,000					6,120				
		Meetings with district vermin team	1,200	1,200	1,224	1,248	1,273	1,299	1,325	1,351	1,378	1,406	1,434
	Conduct awareness on animal behavior	Meetings	4,000	4,000	4,080	4,162	4,245	4,330	4,416	4,505	4,595	4,687	4,780
	Erect electric fences around HWCs hotspots	Construction of 8km annually	400,000	400,000	408,000	416,160	424,483	432,973	441,632	450,465	459,474	468,664	478,037

Specific Objectives	Actions	Input (Units)	Unit Cost	Y1 (000)	Y2 (000)	Y3 (000)	Y4 (000)	Y5 (000)	Y6 (000)	Y7 (000)	Y8 (000)	Y9 (000)	Y10 (000)
		Awareness	4,000	4,000	4,080	4,162	4,245	4,330	4,416	4,505	4,595	4,687	4,780
To enhance community livelihood alternatives	Identify and promote suitable income generating projects for the local community	At least 1project per year	10,000	10,000	10,200	10,404	10,612	10,824	11,041	11,262	11,487	11,717	11,951
		Meetings	4,000	4,000	4,080	4,162	4,245	4,330	4,416	4,505	4,595	4,687	4,780
	Promote community Tourism outside the reserve	Meetings	4,000	4,000	4,080	4,162	4,245	4,330	4,416	4,505	4,595	4,687	4,780
		Mapping	6,000	6,000					6,120				
	Promote tree planting outside the reserve	Community training (Facilitator)	20,000	20,000									
		Purchase of nursery materials(wheel barrows, spades, watering can, seed, polythene pots	1,014	1,014									
		Monitoring (Facilitation)	248	248	253	258	263	268	274	279	285	291	296
	Conduct community exchange visits for learning		32,190		32,190		32,834		33,490		34,160		34,843
	Review the concessioner agreement	Meetings	4,000	4,000					4,080				
	Implement the recommendations of the concession Agreement review	Monitoring (Facilitation)	248	248	253	258	263	268	274	279	285	291	296
		Other incidental costs (Lump sum)	10,000	10,000	10,200	10,404	10,612	10,824	11,041	11,262	11,487	11,717	11,951

Specific Objectives	Actions	Input (Units)	Unit Cost	Y1 (000)	Y2 (000)	Y3 (000)	Y4 (000)	Y5 (000)	Y6 (000)	Y7 (000)	Y8 (000)	Y9 (000)	Y10 (000)
To regulate resource access	Conduct resource assessment to determine availability of the resources	Staff facilitation (4)	1,800		1,800			1,836			1,873		
	Review and update expired resource assess MoUs	Meetings	4,500	4,500		4,590		4,682		4,775		4,871	
		Staff facilitation(4)	1,800	1,800		1,836		1,873		1,910		1,948	
	Monitor resource off-take	Staff facilitation(4)	1,800	1,800	1,836	1,873	1,910	1,948	1,987	2,027	2,068	2,109	2,151
Conservation education and awareness	Develop and implement a conservation education programme(Hosting at the CEC)	Meetings	6,000	6,000	6,120	6,242	6,367	6,495	6,624	6,757	6,892	7,030	7,171
		Staff facilitation	10,800	10,800	11,016	11,236	11,461	11,690	11,924	12,163	12,406	12,654	12,907
	Procure conservation education materials	Projector, PA system, generator, laptop, charts, white board	16,000	16,000									
	Sensitize local communities and other stakeholders on the importance of conserving Ajai Wildlife Reserve(Outreach)	Meetings	6,000	6,000	6,120	6,242	6,367	6,495	6,624	6,757	6,892	7,030	7,171
		Staff facilitation	10,800	10,800	11,016	11,236	11,461	11,690	11,924	12,163	12,406	12,654	12,907
	Conduct conservation outreach activities in surrounding schools	Staff facilitation	12,960	12,960	13,219	13,484	13,753	14,028	14,309	14,595	14,887	15,185	15,488

Specific Objectives	Actions	Input (Units)	Unit Cost	Y1 (000)	Y2 (000)	Y3 (000)	Y4 (000)	Y5 (000)	Y6 (000)	Y7 (000)	Y8 (000)	Y9 (000)	Y10 (000)
	Support community conservation initiatives	Staff facilitation(evaluation)	2,808	2,808	2,864	2,921	2,980	3,039	3,100	3,162	3,226	3,290	3,356
		Lump sum	5,000	5,000	5,000	5,000	5,000	5,000	5,000	5,000	5,000	5,000	5,000
Tourism Development and Financial Sustainability													
To ensure that tourism potentials are identified, developed and promoted	Identify and map tourism attractions outside AWR		<i>Covered in Community conservation</i>										
	Conduct a viability study of potential tourism sites/attractions	Consultancy	90,000	90,000									
	Develop Sport fishing along the Nile	Fishing equipment(hooks, lures, fishing rods, life jackets)	13,500				13,500				13,770		
		Boat and Engine	90,000				90,000						
		Fuel	18,000				18,000	18,360	18,727	19,102	19,484	19,873	20,271
		Marine ranger allowances	2,700				2,700	2,754	2,809	2,865	2,923	2,981	3,041
	Develop water tourism from Ajai WR, through Kabwoya WR to Semuliki NP along Albert Nile, Lake Albert and Semuliki River.	Consultancy	90,000							90,000			
	Establish a standard camp site at Eranve hill	Water system	50,000		50,000								

Specific Objectives	Actions	Input (Units)	Unit Cost	Y1 (000)	Y2 (000)	Y3 (000)	Y4 (000)	Y5 (000)	Y6 (000)	Y7 (000)	Y8 (000)	Y9 (000)	Y10 (000)
		Toilet	30,000		30,000								
		Resting shelter	10,000		10,000								
		Tents	10,000		10,000								
	Establish nature walk trails from Eranve Hill to the Gazi wetland and Ajai Island		20,000	20,000									
	Establish Ajai cultural centre	Concession	4,000						4,000				
	Increase and maintain the short guided trails around Ayavu	Opening	3,250	3,250									
		Maintenance	6,000	6,000	6,120	6,242	6,367	6,495	6,624	6,757	6,892	7,030	7,171
	Establish a visitor information centre at Ayavu		1,000,000			1,000,000							
	Concession out a 20 bedroom capacity Eco-lodge at Ayavu	Operational costs	4,000							4,000	4,080		
	Concession out a 20 bedroom capacity Eco-lodge at Ombi Hill	Operational costs	4,000				4,000	4,080					
	Promote AWR at National and International tourism markets		15,000	15,000	15,300	15,606	15,918	16,236	16,561	16,892	17,230	17,575	17,926
Governance and Corporate Affairs													

Specific Objectives	Actions	Input (Units)	Unit Cost	Y1 (000)	Y2 (000)	Y3 (000)	Y4 (000)	Y5 (000)	Y6 (000)	Y7 (000)	Y8 (000)	Y9 (000)	Y10 (000)
To improve stakeholder and staff coordination	Conduct regular stakeholder coordination meetings	Stakeholders facilitation	4,000	4,000	4,080	4,162	4,245	4,330	4,416	4,505	4,595	4,687	4,780
		Staff facilitation	2,000	2,000	2,040	2,081	2,122	2,165	2,208	2,252	2,297	2,343	2,390
		Meals and refreshments	4,000	4,000	4,080	4,162	4,245	4,330	4,416	4,505	4,595	4,687	4,780
	Conduct regular staff meetings	Meals and refreshments	3,600	3,600	3,672	3,745	3,820	3,897	3,975	4,054	4,135	4,218	4,302
	Conduct regular supervisory field visits	Facilitation	3,456	3,456	3,525	3,596	3,668	3,741	3,816	3,892	3,970	4,049	4,130
	Participate in selected district and sub-county meetings		2,880	2,880	2,938	2,996	3,056	3,117	3,180	3,243	3,308	3,374	3,442
	Participate in conservation events		2,304	2,304	2,350	2,397	2,445	2,494	2,544	2,595	2,647	2,700	2,753
	Participate in public events		2,880	2,880	2,938	2,996	3,056	3,117	3,180	3,243	3,308	3,374	3,442
	Promote corporate social responsibility activities		20,000	20,000	20,400	20,808	21,224	21,649	22,082	22,523	22,974	23,433	23,902



 *Part Six*

MONITORING AND EVALUATION

6.1 Monitoring and Evaluation Framework

The Monitoring and Evaluation Framework for AWR GMP is a mechanism for periodic measurement and analysis of information on the progress of implementing the GMP. The monitoring and evaluation framework for each program stipulates the program goal, outcomes, outputs, indicators, means of verifications and assumptions. Each program has a workplan with columns on log frame, indicators, baseline and targets for each year which amounts to the total target in the last column. The work plan provides a basis for tracking progress of implementation through comparing the baseline and the extent of achieving the targets. The years under which the targets are placed are derived from the summary of the management actions for each output in the various programs.

Monitoring and evaluation of this GMP will also focus on identifying success and lessons areas to enhance; gaps, failures and problem areas to address and generation of information to inform planning, effective resource mobilization and allocation, reporting, accountability and decision making.

Objectives of the Monitoring and Evaluation framework

The specific objectives for the Monitoring and Evaluation framework are to:

- i) Provide the AWR staff and stakeholders with the information needed to guide the GMP implementation in relation to its overall purpose and program objectives
- ii) To guide systematic data collection and analysis so as to generate information on the changes arising from prescribed interventions in the GMP.
- iii) Ensure accountability and value for money (upward accountability to UWA board and management) and downward accountability to the communities and other stakeholders.
- iv) Provide early corrective mechanisms on identified gaps and glaring issues that require corrective and quick action.

Monitoring and Evaluation implementation modalities

The following will be used to implement, monitor and report on the GMP:

- i) Annual operational plans, quarterly work plans and annual budgets
- ii) Annual and quarterly reports
- iii) Feedback from stakeholders
- iv) Mid-term Evaluation
- v) Final evaluation

Routine monitoring

Routine monitoring of will be conducted by AWR staff and key stakeholders. The results from routine monitoring will reflected situational, monthly, quarterly and annual reports. They will also be presented and discussed at management meetings, quarterly and annual reflection meetings

Mid-term Evaluation

This will be conducted after five years of implementation of the GMP. The Monitoring and Evaluation Unit together with the planning unit will conduct the mid-term evaluation. This evaluation will point out the level of implementation of the GMP in relation to the set objectives, the successes, lessons learnt and challenges and gaps that need to be addressed in the remaining period of the GMP.

Final Evaluation

This will be conducted by an external and experienced consultant in the 10th year of implementation of the GMP. The evaluation will assess the extent to which the plan objectives were achieved, effectiveness and efficiency of the interventions and approaches and lessons learnt. The information generated from this evaluation will inform the next GMP development process as well as GMP development processes for other protected areas.

Reporting, Information management, sharing systems and procedures

Reporting and sharing of information arising from implementation of the GMP will follow the official UWA communication and information sharing mechanisms. Feedback on certain aspects of implementation will be disseminated to the stakeholders through regular stakeholder coordination meetings and through progress/monitoring reports. On quarterly and annual basis, the AWR management shall prepare and submit reports in line with the developed reporting framework. Periodic staff meetings will be utilized to sharing progress of implementation of the GMP interventions.

References

- 1) MTWA (2013): Ministry of Tourism, Wildlife and Antiquities: Tourism Policy of Uganda 2014. Kampala, Uganda
- 2) MTWA (2014): Ministry of Tourism, Wildlife and Antiquities: Uganda Wildlife Policy. Kampala, Uganda
- 3) MWE (2013): The National Forest Plan 2011/12 - 2021/22: Ministry of Water and Environment. Kampala, Uganda
- 4) NPA (2013): Uganda Vision 2040. Kampala, Uganda
- 5) NPA (2020): The National Development Plan III (NDPIII) 2020/21-2024/25. Kampala, Uganda
- 6) The National Forestry and Tree Planting Act, 2003. Kampala, Uganda.
- 7) The Uganda Wildlife Act (Cap. 200) 2000. Kampala, Uganda
- 8) The Uganda Wildlife Act, 2019. Act No. 17; Acts Supplement No. 10 to the Uganda Gazette No. 49, Volume CXII. Printed by UPPC, Entebbe by Order of Government
- 9) Thomas S. (2016): National Biodiversity Strategy and Action Plan II (NBSAPII). Available from website: <https://climatefinance.gov.gd/embedded-pdf/national-biodiversity-strategy-and-action-plan2016-2020/>
- 10) UWA (2020): Uganda Wildlife Authority Strategic Plan 2020/21 - 2024/25. Kampala, Uganda
- 11) UWA (2007): Ajai Wildlife Reserve General Management Plan (2007-2017). Kampala, Uganda
- 12) UWA (2012): Murchison Falls Conservation Area General Management Plan (2012 -2022). Kampala, Uganda
- 13) UWA (2018): State of Wildlife Resources in Uganda 2018. Uganda Wildlife Authority, Kampala

Annexes

Annex 1: UWA Planning Team

Kapere Richard	Manager Planning, UWA
Edison Nuwamanya	Chief Warden, MFCA
Babu Bakhit Olanya	Warden In-Charge, AWR
Chemonges	Warden Community Conservation, MFCA
Anywar Richard	Community Conservation Ranger
Mamgbi Richard	Lance Corporal Ranger
Amaniyo Akille	Ecological Monitoring Ranger
Olweny Modesto	Head ranger

Annex 2: Coordinates of areas visited during Field Reconnaissance exercise

s/n.	Northing (36N)	Easting (UTM)	Observation
1	0311494	0316953	Madali ranger outpost
2	0311502	0316869	
3	0311432	0316803	
4	0311340	0316736	
5	0310825	0316355	
7	0310658	0316302	
8	0310527	0316204	
9	0310384	0316053	
10	0304912	0319821	
11	0310130	0316058	
12	0309977	0316073	
13	0309913	0316115	
14	0309650	0316188	
15	0309511	0316190	
16	0309408	0316189	
17	0309131	0316040	
18	0309017	0315987	Madali Eramve hill Junction
19	0308998	0315974	
20	0308809	0315856	
21	0308487	0315723	
22	0308113	0315603	
23	0307937	0315493	
24	0307732	0315433	
25	0307705	0315405	Pawor-Madali Junction
ROAD THROUGH THE PA IN KELERUVA IN DEGIA VILLEGE			
1	0310380	0323008	
2	0310342	0323157	
3	0310432	0322803	
4	0310534	0322624	
5	0310609	0322238	
6	0310638	0322101	Bridge on Keleruva river
ROAD FROM MADALI JUNCTION TO ERAMVE HILL			
1	0308537	0317018	Eramve hill
2	0308588	0317016	
3	0308658	0316942	
4	0308704	0316840	
5	0308891	0316284	
6	0309017	0315987	Eramve hill-Madali junction
Points of interest			
7	0313590	0312784	Akavu p/s in Panduku parish Pawor s/c
8	0322373	0322373	Ajai Island
9	0310554	0322238	Ajai Forest
10	0308535	0317013	Eramve hill
11	0299253	0311147	Laali ranger outpost
12	0303469	0317975	Ajai Headquarter

Annex 3: Field Reconnaissance and Consultative meeting attendance lists

PROTECTED AREA LEVEL CONSULTATIONS	
Olweny Modesto	Head ranger
Anywar Richard	Community Conservation Ranger
Mohammed Suleiman	Driver
Mamgbi Richard	Lance Corporal Ranger
Amaniyo Akille	Ecological Monitoring Ranger
Babu Bakhit Olanya	Warden In-Charge, AWR
Otima Robert	Driver
Kapere Richard	Manager Planning
Irumba Decioerius	Consultant
Wabusa M Peter	Accounts, AWR
Edison Nuwamanya	Chief Warden, MFCA
OKOLLO SUBCOUNTY CONSULTATIVE MEETING	
Faiza Twaha	Woman Councilor
Bayoa Joseph	Representative of Local Council II chairman
Nsubuga Emmanuel	Youth Representative
Angulima Vincent	Youth Secretary
Reverand Canon Drazua Joshua	Cultural Mediator
Peter Nehemiah	LC II chairman
Nyakuta Geoffrey	LC I chairman
Madimva Rokoni L Odama	Vice Secretary Community Association
Bulea Amos	Community Association Chairperson Onyomu Parish
Odama Tom	Youth representative LC III
Adule Lawrence	Youth representative LC III
Akaka John	Youth representative LC III
Odama Alcino	Elder
Bulemi Samuel	Youth
Epiimai Innocent	Elder
Ruben Atiba	Elder
Arima Benard	Youth
Irumbo Deziderius	Consultant
Okweng Modesto	Head ranger AWR
Amaniyo Akile	EMR-AWR
Anywar Richard	CCR AWR

Mamgbi Richard	LE Ranger AWR
Kapere Richard	Planning Manager
Edison Nuwamanya	Chief Warden
Udah Gasper	LC I
Babu Bakhit Olanya	W/C- AWR
Luizi Alli	Elder
Agabo Jimmy	Farmer
Aniku Patrick	Farmer
Ondoga Genesis	Farmer
Bako Santina	House wife/ Woman councilor LC III
Otim Robert	Driver
PAWOR SUBCOUNTY CONSULTATIVE MEETING	
Martin Owitho	V.C/ LC III Pawor
Omonyi Ratib	LC I Akavu
Okwong Geoffrey	LC I Andir
Pacutho Annet	Chairperson Women/C
Driciru Jenny	Teacher
Okwera Isaac	Head Teacher Akavu P/S
Abimba Benada	
Nguma Asafu	Leader
Lillian Draru	Farmer
Oryema N Joel	Farmer
Anguyo Hzadr	Farmer
Acamotho Konsantino	Farmer
Babu Bakhit Olanya	W/C-Ajai WR
Olweny Modesto	H/R AWR
Oyeki	Farmer
Drabe Twaha	Farmer
Rwothoniio M Swaibu	Farmer
Thorach Bashir	Farmer
Christopher Ovona	Farmer
Okumu Abubakari	Farmer
Angundru Michael	Farmer
Wokorach Gadafi	Farmer

Angalia Richard Grisim	Farmer
Otim Abubakar	Farmer
Obitre Mansur	Farmer
Orombi Rashid	Farmer
Mamgbi Richard	LE Ranger AWR
Amaniyo Akile	EMR AWR
Anywar Richard	CCR UWA AWR
Mohammed Suleiman	Driver AWR
Aziku Hamuza	Farmer
Bato Paul	Farmer
Stephen Olyel	Farmer
Nyazaru Zalika	Farmer
Beatrice Akeci	Farmer
Rozi Adoch	Farmer
Faihda Jenka	Farmer
Achan Pasika	Farmer
Auma Irene	Farmer
Nyagenga Joyise	Farmer
Damuriko Olaya	Farmer
Ashiraf Lematia	Farmer
Masendi Swaib	Farmer
Madimva Rokoni L Odama	Vice Secretary Community Association AWR
Agenonga Ahmed	Farmer
Amony Alice	Farmer
Tekakwo Seima	Farmer
Aweko Loice	Farmer
Jumanywal Hillion	Church teacher
Okuru Peter	Church teacher
Odongkara Xavier	CDO- Pawor S/C
Torach Hamid	CDO- Pawor S/C
Juwoi Lonjino	LC I
Odongo Hudson	Farmer

Joise Lukuru	
Achora Alfred	Farmer
Chanrach Raimon	Farmer
Oirwoth Mosese	Farmer
OGOKO SUBCOUNTY CONSULTATIVE MEETING	
Drate Edwin Cyprus	Community Development officer (CDO)
Eyotaru Rosyline	P/Chief Yachi
Adalla A John	P/Chief Ayavu
Bajole John	LC I chairman Palandra village
Madimva Rokoni L Odama	Vice Secretary Community Associations
Adebo Simon	LC II CIMA
Driuaru Alice	
Obebaku Robert	LC I Alijoda Village
Angunaru Isaac	LC I Oeiba Village
Adia Victor	LC I chairman Lali
Hon. Okumu Felix	Male Youth Councilor Ojoko S/C
Hon. Alisa R Kenedy	Male PWD Councilor Ojoko S/C
Candiga Michael	Boda Ogoko
Aluma Vallery Timothy	Chairman Headquarters Association Ogoko S/C
Ondoga Shiraj	LC I Chairman E.Jawura
Matua Gard Alifayo	ABEA Land Committee Chairman
Abiriga Tom	LC II chairman Ayavu Parish
Acema Moses	Member
Ezangu Gilbert	Member
Atibo Denis	Member
Ajidra Amadi	Boda
Odama Rhone	Health assistant Ogoko S/C
Ayella Joel	EC Police Ogoko S/C
Arudraku Alex	LC I C/M Degia village
Anguyo John	Police Officer
Abiko Jenny Rose	Chairperson women council Ogoko S/C
Juma Asuman	Resource use chairman Olali
Agali John	Sub county Chief Ogoko
Atiku Patrick	LC III chairperson Ogoko S/C
Amanyo Akile	EMR- AWR

Olweny Modesto	Head Ranger AWR
Mamgbi Richard	LE Ranger AWR
Anywar Richard	CCR AWR
Babu Bakhit Olanya	W/C Ajai W/R
Andima Amin Abdul	H/R Ayavu P/S
Vulima Adinan Onaia	LC I West Jawura
Amagule Yudah	LC I Ayavu Gazi village
Ndema Raone	Parish Chief Eniyo
Ajidra Nelson	Member
Onzidimai Ibrahim	Payawe village
Gidaga Benard	P/Chief Olali
Buga Simon	LC I Alivu

Annex 4: Bird species checklist in AWR

1. White Pelican (*Pelicanus onocrotalus*)
2. Long-Tailed Cormorant (*Phalacrocorax onocrotalus*)
3. Greater Cormorant (*Phalacrocorax Carbo*)
4. Dwarf Bittern (*Ixobrychus sturmi*)
5. Grey Heron (*Ardea cinerea*)
6. Goliath Heron (*Ardea goliath*)
7. Black-headed Heron (*Ardea melanocephala*)
8. Purple Heron (*Ardea purpurea*)
9. Squacco Heron (*Ardea ralloides*)
10. Green-backed Heron (*Butorides striatus*)
11. Little Egret (*Egretta garzetta*)
12. Hammerkop (*Scopus umbretta*)
13. Open-billed Stork (*Anastomus lamelligerus*)
14. Abdim's Stork (*Ciconia abdimii*)
15. Woolly-necked Stork (*Ciconia episcopus*)
16. Saddlebilled Stork (*Ephippiorhynchus senegalensis*)
17. Marabou Stork (*Leptoptilus crumeniferus*)
18. Hadada Ibis (*Bostrychia hagedash*)
19. Lappet faced Vulture (*Torgos tracheliotus*)
20. African Harrier Hawk (*Polyboroides radiatus*)
21. Bateleur (*Terathopius ecaudatus*)
22. Wahlberg's Eagle (*Aquila wahlbergi*)
23. Common Buzzard (*Buteo buteo*)
24. Long-crested Eagle (*Lophaetus occipitalis*)
25. Gabar Goshawk (*Melierax gabar*)
26. Dark Chanting Goshawk (*Melierax metabates*)
27. Martial Eagle (*Polemaetus bellicosus*)
28. Fish Eagle (*Haliaeetus vocifer*)
29. Black Kite (*Milvus migrans*)
30. Black shouldered Kite (*Elanus caeruleus*)
31. Vulturine Guinea fowl (*Numida meleagris*)
32. Crowned Crane (*Balearica pavonina*)
33. Black Crake (*Limnocorax flavirostris*)
34. African Jacana (*Actophilornis africanus*)
35. Wattled Plover (*Venellus tectus*)
36. Black-headed Plover (*Vanellus tectus*)
37. Namaqua Dove (*Oena capensis*)
38. Ring-necked Dove (*Streptopelia capicola*)
39. Blue spotted Wood Dove (*Turtur abyssinicus*)
40. Green Pigeon (*Treron australis*)
41. Shoebill Stork (*Balaeniceps rex*)
42. Brown Parrot (*Poicephalus meyeri*)
43. Eastern Grey Plantain Eater (*Crinifer zonurus*)
44. Bare faced Go-away bird (*Corythaixoides personata*)
45. White-crested Turaco (*Tauraco leucolophus*)
46. Levillant's Cuckoo (*Clamator levillantii*)
47. Blue-headed Coucal (*Centropus monachus*)
48. Senegal Coucal (*Centropus senegalensis*)
49. White-browed Coucal (*Centropus superciliosus*)
50. Pearl spotted Owlet (*Glaucidium pearlatum*)
51. Pel's Fishing Owl (*Scotopelia peli*)
52. Palm Swift (*Cypsiurus parvus*)
53. speckled Mousebird (*Colius striatus*)
54. Blue-Naped mousebird (*Urocolius macrourus*)
55. Pied Kingfisher (*Ceryle rudis*)
56. Malachite Kingfisher (*Alcelo cristata*)
57. Striped Kingfisher (*Halcyon chelicuti*)
58. Chestnut-bellied Kingfisher (*Halcyon leucocephala*)
59. Red-throated Bee-eater (*Merops bullocki*)
60. Swallow Tailed Bee-eater (*Merops hirundineus*)
61. Little Bee-eater (*Merops pusillus*)
62. Abyssinian Roller (*Coracias abyssinica*)
63. Lilac-Breasted roller (*Coracias caudata*)
64. Green Wood Hoopoe (*Phoeniculus purpureus*)
65. Re-Billed Hornbill (*Tockus erythrorhynchus*)
66. Grey Hornbill (*Tockus nasutus*)
67. Abyssinian Ground Hornbill (*Bucorvus*)

- abyssinicus)
68. Double-Toothed Barbet (*Lybius bidentatus*)
 69. Spotted flanked Barbet (*Lybius lachrymosus*)
 70. White-headed Barbet (*Lybius leucocephalus*)
 71. Black-throated Honeyguide (*Indicator indicator*)
 72. Cardinal Woodpecker (*Dendropicos fuscescens*)
 73. Grey Woodpecker (*Mesopicos geertae*)
 74. Bearded woodpecker (*Thripias namaquas*)
 75. Wire-tailed Swallow (*Hirundo smithii*)
 76. European Sand Martin (*Riparia riparia*)
 77. Drongo (*Dicrurus adsimilis*)
 78. Pied Crow (*Corvus albus*)
 79. Common Bulbul (*Pycnonotus barbatus*)
 80. White-browed Robin Chat (*Cossypha natalensis*)
 81. Red-capped Robin Chat (*Cossypha natalensis*)
 82. African Reed Warbler (*Acrocephalus baeticatus*)
 83. Black Flycatcher (*Melaenornis edoloides*)
 84. Wattle-eye (*Platysteira cyanea*)
 85. Paradise flycatcher (*Terpsiphone viridis*)
 86. Black-headed Tchagra (*Tchagra senegala*)
 87. Fiscal shrike (*Lanius collaris*)
 88. Fiscal shrike (*Lanius collaris*)
 89. Grey-backed fiscal (*Lanius excubitoius*)
 90. White-crowned Shrike (*Eurocephalus rueppelli*)
 91. Helmet Shrike (*Prionops plumata*)
 92. Blue eared Glossy Starling (*Lamprotornis chloropterus*)
 93. Lesser Blue-eared Glossy starling (*Lamprotornis chloropterus*)
 94. Purple Glossy Starling (*Lamprotornis purpureus*)
 95. Ruppeel's Long-tailed Glossy Starling (*Lamprotornis purpuropterus*)
 96. Olive bellied sunbird (*Nectarinia chloropygia*)
 97. Red-chested Sunbird (*Nectarinia erythroceria*)
 98. Shining Sunbird (*Nectarinia habessinica*)
 99. Grosbeak weaver (*Amblyospiza albifrons*)
 100. Parasitic weaver (*Anomalospiza imberbis*)
 101. Nothern Red Bishop (*Euplectes franciscanus*)
 102. Red-headed weaver (*Anaplectes rubriceps*)
 103. Black winged Red Bishop (*Euplectes hordeaceus*)
 104. Red headed malimber (*Malimbus rubricollis*)
 105. Black-headed Weaver (*Ploceus cucullatus*)
 106. Masked Weaver (*Phloceus velatus*)
 107. Yellow backed weaver (*Ploceus melanocephalus*)
 108. Spectacled Weaver (*Phloceus ocularis*)
 109. Slender billed weaver (*Ploceus pelzelni*)
 110. White-browed Sparrow Weaver (*Plocepasser mahali*)
 111. Pin-tailed Whydah (*Vidua macroura*)
 112. Common waxbill (*Estrilda astrild*)
 113. African Firefinch (*Lagonosticta rubricata*)
 114. Red-billed Firefinch (*Lagonosticta senegala*)
 115. Red-Cheeked Cordon-bleu (*Uraeginthus bengalus*)
 116. Black & White manikin (*Lonchura bicolor*)
 117. Secretary bird (*Sagittarius serpentarius*)
 118. Shoe?Whale headed stork (*Balaeniceps rex*)
 119. Buff Crested Bustard (*Eupodotis ruficrista*)
 120. African pied Wagtail (*Motacilla aguimp*)
 121. Grey headed Sparrow
 122. Yellow vented Bulbul (*Pycnonotus barabatus*)



Southern White Rhino at Ziwa



Northern White Rhino & Calf formerly in Ajai AWR and MFNP

Published by:
Uganda Wildlife Authority
Plot 7 Kira Road, Kamwokya
P.O. Box, Kampala Uganda
© 2021 Uganda Wildlife Authority

